

35th Anniversary
1986-2021

Fall 2021

A Dynamic Challenge



Midwest University

www.midwest.edu



Midwest University

Wentzville, MO. U.S.A



Dr. Lindell F. Shumake
Chairman, Board of Trustees



Dr. James Song
President, Founder

A Dynamic Challenge

Leaders of the 21st century should possess the ability to apply themselves in the environment of an ever-changing world. They should respond to global concerns in flexible and prompt ways by cooperating with worldwide networks of international academics.

Leaders of the future should specialize in their talents to reach their full potential. It's important to turn their responsibility into practice efficiently.

To do so, they should be cognizant of modern issues and thoroughly understand their role as an individual and as a leader. They should be able to design, plan, and execute innovative solutions to address universal needs for shared joy and benefit.

We invite you to the Midwest University Degree Program, one of the most prominent educational plans, which will offer diverse fields of study to communicate and network with prominent pioneers of intelligence, character, spirituality, and leadership to improve adaptability for the new paradigm.



Accreditation

U.S Department of Education (USDE) OPE ID: 035283
www.ope.ed.gov/accreditation

CHEA recognized by the Council for Higher Education Accreditation.
(CHEA) www.chea.org

ABHE - Midwest University was Granted Accredited Status
ABHE. 5850 T.G. Lee Blvd., Ste. 130, Orlando, FL 32822,
407.207.0808. www.abhe.org

IACBE International Accreditation Council for Business Education
An educational member is an academic business unit that has met the IACBE's requirements for educational membership and has affirmed its commitment to excellence in business education.

ABHE and IACBE, NC-SARA
are institutional accrediting bodies recognized by the Council for Higher Education Accreditation (CHEA) (www.chea.org) And U.S Department of Education (USDE) (www.ope.ed.gov/accreditation)

International Student SEVIS I-20. F-1 Visa
International Student SEVIS I-20 Midwest University is approved by the U.S. Department of Homeland Security, a Division of U.S. Citizenship and Immigration Service (USCIS), to issue Form I-20 to nonimmigrant students. Main campus and Washington DC. Campus.

Missouri Department of Higher Education
<https://dhewd.mo.gov/public-and-independent-colleges.php>
Approved Veterans Benefits



J-1 VISA
EXCHANGE VISITOR PROGRAM

U.S. Department of State Certified

1. Professor and Research Scholar Programs
Postdoc Program, any Professional Area,
2. Exchange Visitor College and University Student Intern
J-1 Study, Academic Training, Certificate programs



National Council for State Authorization Reciprocity Agreements
A voluntary, regional approach to state oversight of distance education



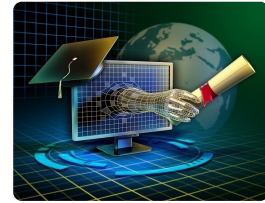
Educational Member





Midwest Degree Programs

2021-2022 Academic Year



Bachelor Degrees

Bachelor of Arts in Business Administration

(123 Credit hours) with Emphasis

Asset Investment
International Business
International Marlin Business
Marketing -
Real Estate Investment Management

Bachelor of Arts in Theology

(123 Credit Hours) with Emphasis

Biblical Studies
Christian Education

Bachelor of Science in Aviation Management / Flights

(123 Credit) with Emphasis

Flight Operations (Pilot) (FAA, Drone)
Helicopters Pilot (FAA),
Cabin Crew
Flight Dispatcher
Aircraft Maintenance Engineer



Master Degrees

Master of Arts in Counseling

(48 Credit Hours) with Emphasis

Christian Counseling
Life Design Counseling And Coaching
Marriage and Family Counseling
Mental Health Counseling

Master of Arts in Education

(48 Credit Hours) with Emphasis

Brain and Gifted Education
Christian Education

Master of Arts in Teachers of English to Speaks of Other Language.

(36 Credit hours) with Emphasis

Master of Business Administration

(36 Credit Hours) with Emphasis

Asset Investment Management
Community Development
Defense Fusion System Management
Future Mission Strategy Management
Global Business
Health Care Management
Leadership
Management Innovation Strategy
Public Policy and Administration
Real Estate Investment Management
Sport Management
Strategic Human Resource Management

Master of Divinity (96 Credit Hours)

Master of Music

(48 Credit Hours) Area Emphasis

Music Education, Church Music, Composition
Conducting, Instrument, Music Coaching, Piano, Voice

Doctoral Degrees

Doctor of Leadership

(48 Credit Hours) with Emphasis

Brain Developing and Gifted Education
Entrepreneurial Leadership
Health Care Management & Leadership
Management Innovation Strategy
Organizational / Ministry/ Mission/ Leadership
Political Leadership
Sport Management
Real Estate Management

Doctor of Ministry

(39 Credit Hours) with Emphasis

Counseling Ministry
Educational Ministry
Inter-Cultureal Ministry
Pastoral Theology

Doctor of Musical Arts

(60 Credit Hours). Specialization Area

Music Education, Church Music, Composition
Conducting, Instrument, Voice, Piano
Music Coaching & Musical Arts Convergence

Ph. D. in Counseling Psychology

(60 Credit Hours) with Emphasis

Marriage and Family
Mental Health
Life Design Counseling And Coaching

Ph. D. in Education

(60 Credit Hours) with Emphasis

Brain Developing and Gifted Education

Ph.D. in Leadership

(60 Credit Hours) with Emphasis

Defense Fusion Leadership
Entrepreneurial Leadership
International Aviation Management & Leadership
International Culture & Arts
Management Innovation Strategy
Organizational / Ministry/ Mission Leadership
Public Health Care Policy & Management
Political Leadership
Real Estate Management & Auction



ESL English as a Second Language
English, Aviation English, Career English

Certificate Programs

International Professional Pilot, Maintenance - FAA
Aviation Safety and Security, Cabin Crew
Leadership, Music, Counseling, Education, Ministry



U.S Veterans Benefits

Education of veterans and their eligible dependent, National Guardsmen, and select Reservists **APPROVED** courses offered by Midwest University. Education of veterans or eligible persons under the provisions of Section 3676, Title 38, United State Code and Title 5, Missouri Code of State Regulation 30-4, 020.

Tuition

per credit hour

Bachelor Degree Programs

B.A. Business Administration	\$395.00
B.A. Theology / Education	\$250.00
B.S. Aviation Management / Flights	\$395.00

Master Degree Programs

M.A. Counseling	\$395.00
M.A. Education in Christian Education	\$395.00
M.A. Education in Brain / Gifted Education	\$495.00
M.A. TESOL English Education	\$395.00
Master of Music	\$395.00
MBA.	\$495.00
M. Div,	\$250.00

Doctor Degree Programs

Doctor of Leadership	\$495.00
Doctor of Ministry	\$295.00
Doctor of Musical Arts	\$495.00
Ph.D. in Counseling Psychology,	\$550.00
Ph.D. in Education	\$550.00
Ph.D. in Leadership	\$550.00



MIRI

J-1 Reserch Scholar & Student- Intern
Midwest International Reserch Institute
Midwest University
Wentzville, MO, USA

- Global Leadership
- Research for International Education
- Public Policy & Future National Strategic
- Global Diaspora / Immigrant Culture
- International Health Supplement / Bio Natural Healing/ Healthcare
- International Business / Trade / Management, Stat Business.
- Research for World Religions and Mission
- Big-data Analysis & Computer Science, e-Sport, AI.
- International Aviation / Space / Automobile, Drone.
- International Language
- International Human Rights
- International Institute of Arts / Music
- Government- public service, Human Resources, Tax, Local Government



A Dynamic Challenge



Study Options

On Campus Courses, Online Courses, Blended
Courses, Intensive, Independent Studies
Anytime, Anywhere



Bachelor Degree Programs



Bachelor of Arts in Business Administration

123 credit hours with Emphasis

Asset Investment & Management
Global Business Management
International Maritime Business Management
Marketing,
Real Estate Investment Management

Bachelor of Arts in Theology

123 credit hours with Emphasis

Biblical Studies
Christian Education

Bachelor of Science in International Aviation Management / Flight

123 credit hours with Emphasis

Flight Operations (Pilot)
Helicopter Pilot
Flight Dispatcher
Cabin Crew
Aircraft Maintenance Engineer

Admission Requirements

- 1) Application form for admission
- 2) \$100.00 non-refundable application fee
- 3) A brief autobiographical statement
- 4) A high school diploma, high school equivalency test or Ability to Benefit Test
- 5) Application essay
- 6) Recommendation from a former teacher



Dr. John R. Ashcroft
Commencement Main Speaker
Missouri Secretary of State
미주리주 국무장관



You will receive a pilot license issued by the United States Federal Aviation Administration (FAA) and be able to start your career at airlines all over the world. Make your dream come true through Midwest University.



Make Your Dreams Come True at Midwest University

BACHELOR OF SCIENCE IN AVIATION MANAGEMENT / FLIGHTS



After completing your Bachelor of Science in Aviation Management Degree at Midwest University with jetliner or helicopter practical training and passing the US (FAA) Federal Aviation Administration exam, you will be qualified to work anywhere in the world as an airline pilot.

B.S. in Aviation Management / Flight

123 credit hours with Emphasis
 Flight Operations (Pilot)
 Helicopters Pilot
 Aircraft Maintenance Engineer
 Flight Dispatcher
 Cabin Crew

FAA International Professional Pilot Certificate

Man and woman over 17 years old may participate in the Professional aircraft pilot license program from FAA over of 10 months average completion

- Private Pilot Certificate & Instrument Pilot,
- Multi Engine Commercial Pilot

M.B.A.

36 Credit Hours with Emphasis
 Aviation Safety / Security Management

Average Completion (estimated costs)
 Private Pilot Certificate, Instrument Rating
 Commercial Pilot Certificate - AMEL

Included -Housing, Book & Supplies, Course Materials

Aviation ESL, Examiner fee, FAA Medical Exam

payment allocation \$ 22,256.59 x 3 payments

One time payment \$ 64,511.87

Doctor of Leadership 48 Credit Hours with Emphasis
 Aviation Management Leadership

Ph.D. in Leadership 60 Credit Hours with Emphasis
 Aviation Management

Tuition Cost

Degree and Pilot Certificate, Maintenance Engineer Flight Dispatcher

Application Qualification:

- 1) Education, high school grads and those with some or completed college diplomas, college dropouts, or college graduates (recommendation letters)
- 2) Those whose scores are above TOEFL 520, IBT 68, CBT 190, or TOEIC 690
 (Improvement is possible through ESL program for those who have insufficient TOEFL scores)
- 3) Physical condition, Those who are suitable for the pilot's required physical conditions (applicable to FAA terms of body)
- 4) No disqualification grounds for US visa
- 5) No criminal records (including DUI or incidents involving drug or alcohol)
- 6) background check.

1) Application (Test & Interview fee, non-refundable)	\$ 200
International Student - SEVIS Processing fee (non-refundable)	\$ 750
2) Aviation English Program (2 semesters)	\$ 9,000
3) 2 year Transfer Bachelor Degree, 69 credit hours	\$ 27,895
4) 4 year Bachelor Degree 123 credit hours	\$ 48,585





Master Degree Programs



Master of Business Administration

M.B.A. 36 Credit Hours with Emphasis

Asset Investment Management
Aviation safety Security Management
Community Development
Defense Fusion System Management
Futures World Mission Strategy Management
Global Business
Health Care Management
Management Innovation Strategy
Public Policy and Administration
Leadership
Real Estate Investment Management
Sport Management
Strategic Human Resource Management

Master of Music

48 Credit hours with Emphasis

Composition
Conducting
CCM
Church Music
Instruments
Music Coaching
Music Education
Musical Arts Convergence
Piano
Voice

Master of Arts in Teachers of English to Speaks of Other Languages (TESOL)

36 Credit Hours

Admission Requirements for the Master of Arts in TESOL Degree Program:

1. Application and fee \$100.00 (non - refundable)
2. Official transcript of Bachelor's degree from an accredited Institution with GPA 2.25+
3. A 1000 to 1500 word essay describing why you're interested in pursuing the program
4. TOEFL score report (80+) or a Midwest English proficiency test (80+) and an oral interview

Master of Arts in Counseling

48 Credit Hours with Emphasis

Christian Counseling
Life Design Counseling and Coaching
Marriage and Family Counseling
Mental Health Counseling

Master of Arts in Education

48 Credit Hours with Emphasis

Brain / Gifted Education
Christian Education

Master of Divinity

96 Credit hours



Global

MBA

Master of Business Administration

Flexibility for busy professionals
Concerned about fitting an MBA into your already busy schedule? Our flexible program can help. Take classes online, on campus or a hybrid of both, and complete your MBA in just over 1-1.5 years.

Strong network to jumpstart your career
We'll connect you to an impressive faculty roster and a powerful alumni network.

Internationally recognized program
By attending an esteemed program, you'll gain the confidence and credibility you need to succeed.

WHAT'S UNIQUE ABOUT MIDWEST UNIVERSITY

An MBA teaches you essential business fundamentals, including strategic leadership, analytical thinking and communication skills. In today's competitive job market, MBA graduates continue to be in high demand—in fact, 86 percent of companies plan to hire MBA graduates this year

Master of Business Administration

36 Credit Hours with Emphasis

- Asset Investment Management
- Aviation safety / Security Management
- Community Development
- Defense Fusion System / Management
- Future Mission Strategy / Management
- Global Business
- Health Care Management
- Management Innovation Strategy
- Public Policy and Administration Leadership
- Real Estate Investment Management
- Sport Management / Leadership
- Strategic Human Resource Management

- MBA Core Courses 12 credit hours
- Emphasis 12 credit hours
- MB 551 Seminar - Special Topics 3
- MB 689 Internship / Independent Project 6
- CP 690 Capstone / Graduation Seminar 3
- Total 36 Credit Hours**



GSD Director/ Professor, Dr. Kwang H. Chang

Graduate School of Defense

M.B.A. 36 Credit Hours Area Emphasis

Defense Fusion System Management

Ph.D. in Leadership 60 Credit Hours Area Emphasis

Defense Fusion Leadership



U.S Veterans Benefits

Education of veterans and their eligible dependent, National Guardsmen, and select Reservists **APPROVED** courses offered by Midwest University. Education of veterans or eligible persons under the provisions of Section 3676, Title 38, United State Code and Title 5, Missouri Code of State Regulation 30-4, 020.



Doctoral Degree programs

Doctor of Ministry.

40 Credit Hours with Emphasis
Counseling Ministry
Educational Ministry
Inter- Cultural Ministry
Pastoral Theology

Admission Requirements

1. Application form for admission
2. \$100.00 non-refundable application fee
3. A brief autobiographical statement
4. Official transcripts appropriate for the program

D. Min. in Pastoral Theology

1. The M. Div. degree or its accredited institution or equivalent degree
2. A minimum 2.75 out of 4.0 GPA
3. 3 years of substantial post-master's degree ministry experience

D. Min in Counseling, Education, and Inter- Cultural Ministry

1. Master's degree from an accredited institution
2. A minimum 2.75 out of 4.0 GPA
3. Application Essay
4. Recommendation from a church pastor or former teacher.

Doctor of Musical Arts. D.M.A.

60 Credit Hours with Emphasis
Voice, Piano, Composition, Conducting; CCM
Church Music, Instruments, Music Education
Music Coaching, Musical Arts Convergence

Ph.D. in Counseling Psychology

60 Credit Hours with Emphasis
Life Design Counseling And Coaching
Marriage and Family Counseling
Mental Health Counseling

Doctor of Leadership

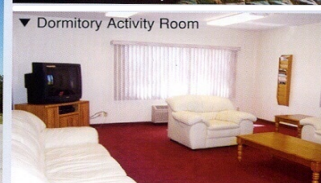
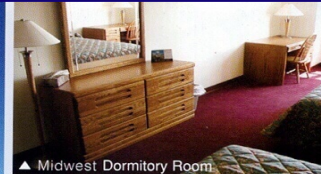
48 Credit Hours with Emphasis
Aviation Management & Leadership
Brain / Gifted Education
Entrepreneurial Leadership
Health Care Management & Leadership
Management Innovation Strategy
Organizational / Ministry/ Mission/ Leadership
Political Leadership
Sport management / Leadership
Real Estate Management

Ph.D. in Education

(60 Credit Hours) with Emphasis
Brain Developing and Gifted Education

Ph.D. in Leadership

60 Credit Hours with Emphasis
Defense Fusion Leadership
Entrepreneurial Leadership
International Aviation Management
International Culture & Arts Leadership
Leadership
Management Innovation Strategy
Organizational / Ministry/ Mission Leadership
Public Health Care Policy & Management
Political Leadership
Real Estate Management & Auction



Master of Arts in Counseling

48 Credit Hours with Emphasis
Christian Counseling
Life Design Counseling and Coaching
Mental Health Counseling
Marriage and Family Counseling

** required for licensure
CO 504 Research and Statistics**
CO 627 Counseling Practicum**
CO 628 Counseling InternshipIII**

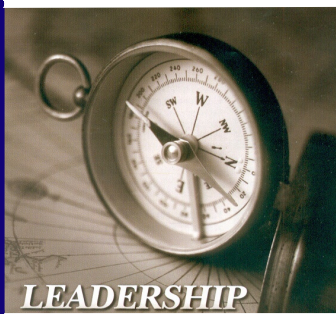
Ph.D. Counseling Psychology

60 Credit Hours with Emphasis
Life Design Counseling and Coaching
Marriage and Family Counseling
Mental Health Counseling

Your career options, depending on your specialization, may include a variety of roles, such as:* Professor, Life designer, Researcher, Counselor, Administrator, Consultant, Political strategist, Teacher, Marketing director, Director of career services, Human resources manager, Staff psychologist, Law enforcement, Probation, or Correctional officer

Ph.D. in Education

(60 Credit Hours) with Emphasis
Brain Developing and Gifted Education





Ph.D. Doctor of Philosophy in Leadership



Ph.D. STUDIES TAKE CHARGE WITH AN ONLINE DOCTORATE

Academic institutions around the country need people who can guide and lead them in positive directions. An online leadership doctorate program at Midwest University can help you meet your Academic goals to become one of tomorrow's leaders and take today's institutions into the future.

During the educational online Ph.D. program, you will participate in a comprehensive study of effective leadership, teaching, and administrative methods. Your Ph.D. online degree programs also provide you with an in-depth insight involved in the educational decision-making process, program planning, and assessment strategies.

Midwest University online Ph.D. Programs include curriculum options that will allow you to become an advanced practitioner with community organizations, higher education institutions. The Ph. D. Studies Online Emphasis available are listed below

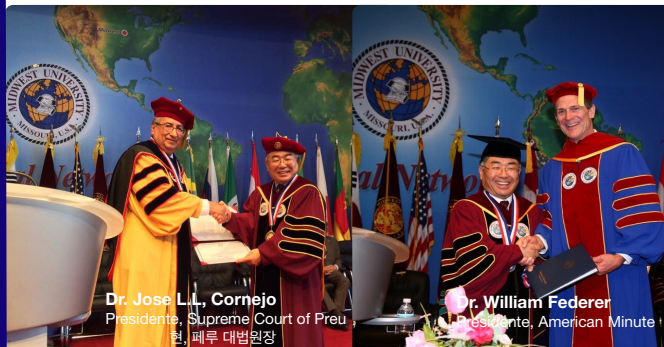
Doctor of Philosophy in Leadership

60 Credits Hours with Emphasis

- Aviation Management & Leadership
- Defense Fusion Leadership
- Entrepreneurial Leadership
- International Culture & Arts Leadership
- Leadership
- Management Innovation Strategy
- Organizational / Ministry/ Mission Leadership
- Public Health Care Policy & Management
- Political Leadership
- Real Estate Management & Auction



Dr. John R. Ashcroft
Missouri Secretary of State
현, 미주리주 국무장관



Dr. Jose L. L. Cornejo
Presidente, Supreme Court of Peru
현, 페루 대법원장

Dr. William Federer
Presidente, American Minute



Dr. Bruce Johnson
President, SIM



Global Leader's Network

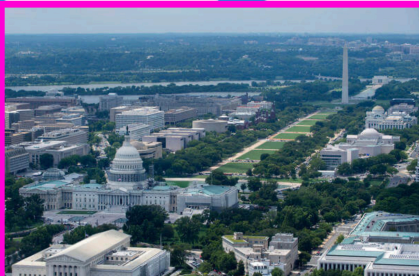
Midwest University has students & alumni in over 70 countries around the world.



Global University



Midwest University
Main Campus, St. Louis
851 Parr Rd. Wentzville, MO 63385 U.S.A
1-(636) 327-4645 usa@midwest.edu



Midwest University
Washington D.C. Campus
wdc@midwest.edu
1-(571) 730-4750



Midwest University
Seoul, Korea Office
Seoul@midwest.edu
(82) 2- 3672-4516

Midwest University
Wentzville, MO, U.S.A
www.midwest.edu

Printed Fall 2021