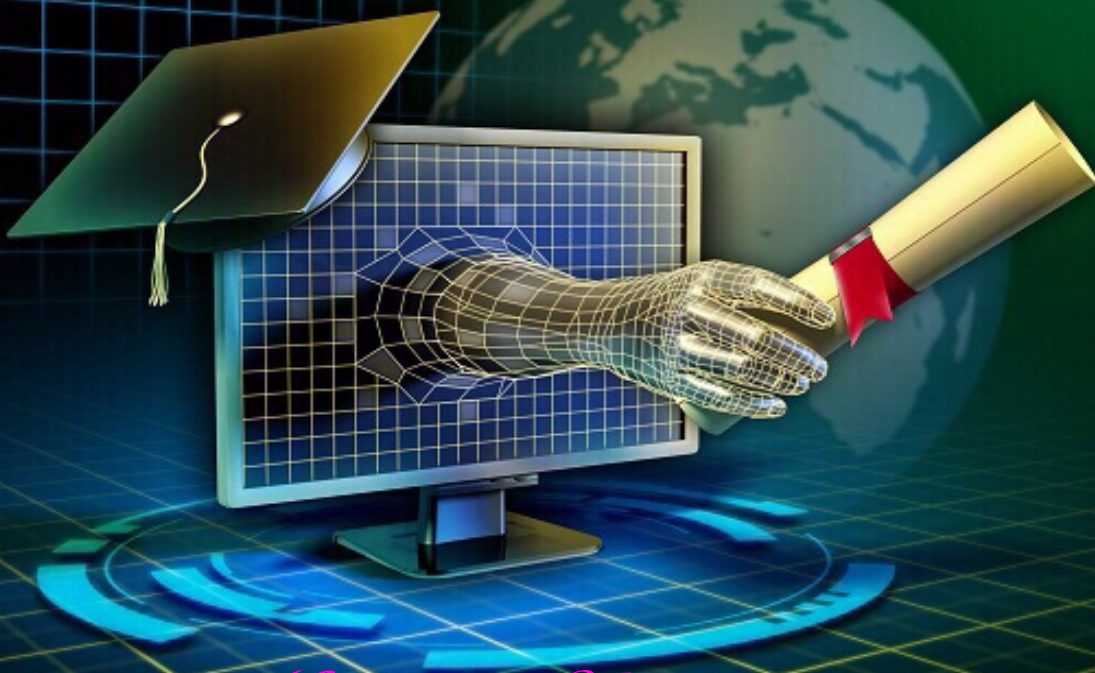


1986-2019

Fall 2019

A Dynamic Challenge



Midwest University

미드웨스트 대학교

www.midwest.edu



Midwest University

Wentzville, MO. U.S.A



Rep. Dr. Lindell F. Shumake
Chairman, Board of Trustees
Former Missouri state House of Representatives



Dr. James Song
President, Founder



A Dynamic Challenge

Leaders of the 21st century should possess the ability to apply themselves in the environment of an ever-changing world. They should respond to global concerns in flexible and prompt ways by cooperating with worldwide networks of international academics.

Leaders of the future should specialize in their talents to reach their full potential. It's important to turn their responsibility into practice efficiently.

To do so, they should be cognizant of modern issues and thoroughly understand their role as an individual and as a leader. They should be able to design, plan and execute innovative solutions to address universal needs for shared joy and benefit.

We invite you to the Midwest University Degree Program, one of the most prominent educational plans, which will offer diverse fields of study to communicate and network with prominent pioneers of intelligence, character, spirituality and leadership to improve adaptability for the new paradigm.



Accreditation 미국 연방정부 대학인준기관 인준

U.S Department of Education (USDE) OPE ID: 035283
www.ope.ed.gov/accreditation

CHEA recognized by the Council for Higher Education Accreditation.
(CHEA) www.chea.org

ABHE - Midwest University was Granted Accredited Status
ABHE. 5850 T.G. Lee Blvd., Ste. 130, Orlando, FL 32822,
407.207.0808. www.abhe.org

ATS Midwest University Graduate School of Theology is an Associate Member with the Association of Theological Schools in the United States and Canada, (ATS). www.ats.edu

ABHE and ATS are institutional accrediting bodies recognized by the Council for Higher Education Accreditation (CHEA) www.chea.org And U.S Department of Education (USDE) www.ope.ed.gov/accreditation

International Student SEVIS I-20. F-1 Visa
International Student SEVIS I-20 Midwest University is approved by the U.S.

Department of Homeland Security, a Division of U.S. Citizenship and Immigration Service (USCIS), to Issue Form I-20 to nonimmigrant students. Main campus and Washington DC. Campus.

Missouri Department of Higher Education 
Degree Programs search. <http://collegesearch.mo.gov/filter.php>

Approved Veterans Benefits 미국 현역 및 전역 군인 전역 장학 혜택



J-1 VISA
EXCHANGE VISITOR PROGRAM

U.S. Department of State Certified 미국무부 인준

1. Exchange Visitor Professor and Research Scholar Programs
2. Exchange Visitor College and University Students

J-1 Student- Intern Programs

J -1 Visa and F-1 Visa.

연구원, 교수, 전문인, 예술인, 공무원, 교사, 목사, 선교사. 미국연구원으로 대학생인턴십, 기능직 전문인 유급 인턴십.

International Student SEVIS I-20. F-1 Visa

Midwest Degree Programs Midwest 학위과정 안내



College and a Graduate School of International Aviation : 국제항공대학(원)

- B.S. in Aviation Management / Flights** 123 Credit Hours
 Aviation Management and Flight (Pilot) 항공경영, 조종사
 Aviation Management Helicopters (Pilot) 항공경영 헬기
 Aviation Maintenance 항공정비
 Flight Dispatcher (Air Traffic Control) 항공 운항사
- M.B.A.** 36 Credit Hours
 Aviation Safety / Security Management 항공안전, 보안
- Ph.D. in Leadership** 60 Credit Hours
 International Aviation Leadership 항공 리더십

College and Graduate School of International Business 경영 대학 (원)

- B.A. in Business Administration** 123 Credit Hours
 Asset Investment Management 자산, 투자 관리
 International Business Management 국제비즈니스
 Int, Marlin Business Management 국제해양경영
 Marketing 마케팅
 Real Estate Investment Management 부동산투자경영
- M.B.A.** 36 Credit Hours
 Asset Investment Management 자산관리, 투자경영
 Aviation Safety / Security Management 항공안전, 보안
 Community Development 지역개발
 Defense Fusion System Management 국방융합경영
 Global Business 국제 비즈니스
 Global Leadership 글로벌 리더십
 Negotiation and Conflict Management 협상, 분쟁 관리
 Public Policy / Administration 공공정책과 행정
 Public / Political Leadership 공공, 정치 리더십
 Public Emergency / Safety Calamity Security 공공 안전, 재난
 Real Estate Investment Management 부동산 투자관리
 Strategic Human Resource Management 인력관리경영

Graduate School of Defense 국방대학원

- M.B.A.** 36 Credit Hours
 Defense Fusion System Management 국방융합경영
- Ph.D. in Leadership** 60 Credit Hours
 Defense Fusion Leadership 국방융합 리더십

Graduate School of Leadership 리더십대학원

- Doctor of Leadership** 48 Credit Hours
 Brain / Gifted Education Leadership 두뇌개발, 영재교육
 Entrepreneurial Leadership 경영 리더십
 International Aviation Leadership 국제항공리더십
 Organizational / Ministry Leadership 조직, 사역리더십
 Public / Political Leadership 공공, 정치 리더십
- Ph.D. in Leadership** 60 Credit Hours
 Brain / Gifted Educational Leadership 두뇌개발, 영재교육
 Defense Fusion Leadership 국방융합리더십
 International Aviation Leadership 국제항공 리더십
 International Culture & Arts 국제문화예술 리더십
 Entrepreneurial Leadership 경영 리더십
 Organizational / Ministry Leadership 조직, 사역리더십
 Public / Political Leadership 공공, 정치 리더십

Graduate School of Counseling 상담대학원

- M.A. in Counseling** 48 Credit Hours
 Christian Counseling 크리스찬 카운셀링
 Life Design Counseling And Coaching 라이프디자인, 코칭
 Marriage and Family Counseling 결혼과 가정상담
 Mental Health Counseling 정신건강 상담
 School Counseling 학교 상담
- Ph. D. Counseling Psychology** 60 Credit Hours
 Marriage and Family Counseling 결혼과 가족상담
 Mental Health Counseling 정신건강 상담
 Life Design Counseling And Coaching 라이프디자인 코칭

Graduate School of Education 교육대학원

- M.A. in Education** 48 Credit Hours
 Brain and Gifted Education 두뇌개발, 영재교육
 Christian Education 기독교 교육
- M.A. TESOL** 36 Credit Hours
 English Education 영어교육
- Ph. D. in Leadership** 60 Credit Hours
 Brain and Gifted Education Leadership 두뇌개발, 영재교육

College and Graduate School of Music & Art 문화예술 대학원

- B.M.** Voice 성악, Composition 작곡 129 Credit Hours
M.M. Piano 피아노, Conducting 지휘, Church Music 교회음악 Instruments 악기 48 Credit Hours
D.M.A. Music Coaching 음악코칭 60 Credit Hours
 Musical Arts Convergence 뮤지컬 아트 컨버전스
- Ph.D.** 60 Credit Hours
 International Culture & Arts 국제문화예술 리더십

College and Graduate School of Theology

- B.A. in Theology** 123 Credit Hours
 Biblical Studies, 신학 Christian Education 기독교교육
- Master of Divinity** 96 Credit Hours
 Divinity 신학
- Doctor of Ministry** 39 Credit Hours
 Counseling 카운셀링
 Education 교육
 Mission 선교
 Pastoral Theology 목회신학
- Ph.D. in Leadership** 60 Credit Hours
 Organizational/ Ministry Leadership 조직, 사역 리더십



Tuition 수업료

per credit hour 학점당 수업료

Bachelor Degree Programs

B.A. Business Administration	\$395.00
B.M.	\$250.00
B.A. Theology / Education	\$250.00
B.S. Aviation Management / Flights	\$395.00

Master Degree Programs

M.A. Counseling	\$320.00
M.A. Education in Christian Education	\$320.00
M.A. Education in Brain/ Gifted Education	\$495.00
M.A. English Education	\$320.00
M.M.	\$320.00
M.B.A.	\$495.00
M.Div	\$250.00

Doctor Degree Programs

Doctor of Leadership	\$495.00
Doctor of Ministry	\$295.00
Doctor of Musical Arts	\$495.00
Ph.D. in Leadership	\$550.00
Ph.D. in Counseling / Psychology	\$550.00

U.S Veterans Benefits

Education of veterans and their eligible dependent, National Guardsmen, and select Reservists **APPROVED** courses offered by Midwest University. Education of veterans or eligible persons under the provisions of Section 3676, Title 38, United State Code and Title 5, Missouri Code of State Regulation 30-4, 020.



ESL (English, Aviation English) 영어교육
Korean Language School & Culture

Certificate Int'l Professional Pilot - FAA

International Aviation Safety and Security, Leadership, Music, Counseling, Education, Ministry, Defense Leadership

MIRI Midwest International Research Institute

Midwest 국제 연구소 www.miriusa.us



- Global Leadership Institute / Forum
- Government Administration Research Institution
- International Education Research Institute
- International Public Policy & Administration Research Institute
- International Future National Strategic Research Institute
- Global Diaspora / Immigrant Culture Research Institute
- International Health Supplement / Bio/Natural Healing / Healthcare Research Institute
- International Business Incubator / Trade / Management Research Institute
- World Religions and Mission Research Institute
- Institute of Big-data Analysis & Computer Science Research Institute
- Global Arts & Culture Research Institute
- International Language Institute
- International Human Rights Research Institute - International Equal Opportunity, Discrimination
- Railroad / Aviation - Safety and Security Research Institute
- International Nuclear Energy Research Institute
- **International business Incubator 국제 비즈니스 창업 센터**

A Dynamic Challenge



Study Options 학점취득방법

On Campus Courses, Online Courses, Blended Courses, Intensive, Independent Studies
Anytime, Anywhere



Bachelor Degree Programs



B.S. in International Aviation Management/ Flight

123 credit hours 국제 항공대학

Aviation Management / Flight Pilot 항공경영 조종사
 Aviation Management Helicopter Pilot 헬기경영 조종사
 Aviation Maintenance 항공정비사
 Aviation Dispatcher 항공 운항사
 Flight Attendant Cabin Crew 승무원

Purpose
 Midwest University offers Bachelor of Science Aviation Management degrees so that students may utilize current management theory and comprehensive aviation knowledge base to manage different segments of aviation.

B.A in Business Administration 경영대학

123 credit hours

Asset Investment Management 투자, 자산관리
 International Business Management 국제경영
 International Marlin Business Management
 국제 해양경영관리
 Marketing 마케팅
 Real Estate Investment Management 부동산투자관리

Purpose
 The Bachelor of Arts in Business Administration degree program is designed to provide students with the fundamental knowledge of business.

B.M. 음악대학

129 credit hours

Emphases- Voice, Piano, Composition, Conducting, CCM, Church Music, Instruments

Purpose
 The Bachelor of Music degree program is designed to train students to become experienced musicians whose career goals comprise largely of performance and education. The wide range of applied areas in music theory, music history and music literature are offered to develop Student performance skills and overall musicianship.

B.A in Theology 신학대학

123 credit hours

Purpose
 The Bachelor of Arts in Theology degree program is designed to prepare students for Christian ministries through a thorough knowledge of the Bible (including biblical languages), biblical theology, practical ministry training and biblical studies.

Biblical Studies 신학전공
 Christian Education 기독교 교육전공

Admission Requirements

1. Application form for admission
2. \$100.00 non-refundable application fee
3. A brief autobiographical statement
4. A high school diploma, high school equivalency test or Ability to Benefit Test
5. Application essay
6. Recommendation from a former teacher



Dr. John R. Ashcroft
 Commencement Main Speaker
 Missouri Secretary of State



You will receive a pilot license issued by the United States Federal Aviation Administration (FAA) and be able to start your career at airlines all over the world. Make your dream come true through Midwest University. 미국 연방 항공국 (FAA)에서 발행 한 파일럿 자격증을 받게되며 전 세계 항공사에서 경력을 쌓을 수 있습니다.

당신의 꿈을 Midwest University를 통해 실현하십시오.



Make Your Dreams Come True at Midwest University

BACHELOR OF SCIENCE IN AVIATION MANAGEMENT / FLIGHTS

After completing your Bachelor of Science in Aviation Management Degree at Midwest University with jetliner or helicopter practical training and passing the US (FAA) Federal Aviation Administration exam, you will be qualified to work anywhere in the world as an airline pilot. 항공 경영학 학사 과정진행중에 제트 여객기 또는 헬리콥터 실습을 받고 미국 연방 항공국 시험 (FAA)을 통과하면 항공사 조종사로 세계 어느 곳에 서나 일할 수 있습니다.

B.S. in Aviation Management / Flights 123 Credit
 Aviation Management and Flight (Pilot, Drone)
 Aviation Flight Management Helicopters (Pilot)
 Aviation Maintenance
 Flight Dispatcher (Air Traffic Control)
 Flight Attendant (Cabin Crew)

M.B.A. 36 Credit Aviation Safety / Security Management
 항공안전,보안 경영

Doctor of Leadership 48 Credit 국제항공 리더십
 International Aviation Leadership

Ph.D. in Leadership 60 Credit 국제항공 리더십
 International Aviation Leadership

FAA International Professional Pilot Certificate

Man and woman over 17 years old may participate in the Professional aircraft pilot license process from FAA over of 12 months

- Instrument Pilot
- Multi Engine Commercial Pilot

Summary estimated costs

Private Pilot Certificate	\$ 12,567.24
Instrument Rating	\$ 9,778.60
Commercial Pilot Certificate - AMEL	\$ 25,929.10
Grand Total	\$ 48,274.85

Tuition & Pilot Certificate Cost

Degree and Pilot Certificate, Helicopter Certificate, Flight Dispatcher

1). Application (Test & Interview fee, non-refundable)	\$ 200
International Student - SEVIS Processing fee (non-refundable)	\$ 600
2). Aviation English Program (2 semesters)	\$ 9,000
3). 2 year Transfer Bachelor Degree, 69 credit hours	\$ 27,895
4). 4 year Bachelor Degree 123 credit hours	\$ 48,585
(Flights Cost Aviation \$48,274, Helicopter	\$ 99,750
5). Only Aviation Pilot Certificate Cost	\$ 48,274

Application Qualification:

- 1) Education, high school grads and those with some or completed college diplomas, college dropouts, or college graduates (recommendation letters)
- 2) Those whose scores are above TOEFL 520, IBT 68, CBT 190, or TOEIC 690
 (Improvement is possible through ESL program for those who have insufficient TOEFL scores)
- 3) Physical condition, Those who are suitable for the pilot's required physical conditions (applicable to FAA terms of body)
- 4) No disqualification grounds for US visa
- 5) No criminal records (including DUI or incidents involving drug or alcohol)
- 6) background check.



Master Degree Programs



Master of Business Administration 경영학석사 M.B.A. 36 credit hours

Asset Investment Management 투자, 자산관리
 Aviation Safety Management 항공안전관리
 Community Development 지역개발
 Future Defense Fusion Management 국방융합경영관리
 Global Leadership 글로벌 리더십
 International Business Management 국제 비즈니스 경영관리
 Negotiation and Conflict Management 협상과 분쟁관리
 Public Emergency / Safety Calamity Security 공공안전과 재난관리
 Public Policy / Administration 공공정책과 행정
 Real Estate Asset Investment Management 부동산 투자 관리
 Strategic Human Resource Management 인력관리전략

M.A. in Counseling 상담학 석사 48 credit hours

Marriage and Family Counseling 결혼과 가정상담
 School Counseling 학교상담
 Christian Counseling 크리스찬 카운셀링
 Life Design Counseling and Coaching 라이프디자인과 코칭
 Mental Health Counseling 정신건강 카운셀링

Purpose
 The purpose of the Master of Arts in Counseling program is to prepare students to serve as professional counselors in a variety of areas of mental health. This degree provides the academic and practical requirement.

M.A. in Education 교육학 석사 48 credit hours

Brain/Gifted Education 두뇌개발, 영재교육
 Christian Education 기독교 교육

Purpose
 The Master of Arts in Education programs offer opportunities for teachers and professionals to improve their practice in many different areas of study including: Brian / Gifted Education and Christian Education. The Master of Arts in Brian / Gifted Education program at Midwest University prepares you as a Midwest student to work effectively with gifted children.

You will examine and analyze research needed to identify and serve gifted children and learn the knowledge and skills required to develop and provide the most current instructional methods and services for gifted students. You will also learn how to create gifted programs based on the needs of a school district and learn how to work with administrators, school board members, and parents.

This program is excellent for teachers in honors classrooms as well as administrators focused on becoming gifted coordinators. When you complete the program, you may also enroll in these courses as electives as allowed by your specific program.

Master of Divinity 신학석사 96 credit hours

Purpose
 The Master of Divinity program is designed to equip students to serve in a wide variety of callings, including pastoral ministry, youth ministry, campus ministry, chaplaincy, and missions.

M.M. 음악석사 48 credit hours

Voice, Piano, Composition, Conducting, CCM, Church Music, Instruments, Music Coaching, Musical Arts Convergence

Purpose
 Master of Music degree program is designed to equip students as professional musicians in their various applied areas from classical to contemporary, enabling them to obtain a profession in music performance and history.

Admission Requirements for the Master of Music Program:

1. Application form for admission with \$100 non-refundable fee.
2. Official transcripts for the program
3. Bachelor's degree in either Music or its equivalent from an accredited institution
4. 2.25 out of 4.0 grade point average (GPA)
5. DVD Audition of music performance or work.
6. Recommendation from former teacher and two recent photographs (for student ID)

M.A. in English Education (TESOL) 영어교육 석사 36 credit hours

Purpose
 The Master of Arts in English Education for Teaching English as a Second Language provides greater opportunities for teaching specialists to enter broader fields of service. This professional credential is designed to prepare English language instructors to assume teaching responsibilities in worldwide settings such as overseas public schools, post-secondary institutions, language schools, and corporate-based language programs.

Admission Requirements for the Master of Arts in TESOL Degree Program:

1. Application and fee \$100.00 (non - refundable)
2. Official transcript of Bachelor's degree from an accredited Institution with GPA 2.25+
3. A 1000 to 1500 word essay describing why you're interested in pursuing the program

Additional requirements for International Students:

4. TOEFL score report (80+) or a Midwest English proficiency test (80+) and an oral interview



Global

MBA

Master of Business Administration

Asset Investment, Real Estate Investment, Global Business Management,
 Public Policy and Administration, Global Leadership,
 Negotiation and Conflict Management,
 Community Development,
 Strategic Human Resource & Management,
 Public Emergency / Safety Calamity Security Management,
 Aviation Safety Management,
 Future Defense Fusion System Management

Flexibility for busy professionals

바쁜 전문인을 위한 유연성

Concerned about fitting an MBA into your already busy schedule?

Our flexible program can help. Take classes online, on campus or a hybrid of both, and complete your MBA in just over 1-1.5 years.

이미 바쁜 스케줄에 MBA를 맞추는 것에 대해 걱정이 됩니까? 우리의 유연한 프로그램이 도움이 될 수 있습니다. 캠퍼스 또는 두 가지 하이브리드를 통해 온라인 수업을 듣고 1-1.5 년 만에 MBA를 완료하십시오.

Strong network to jumpstart your career

강력한 네트워크로 경력에 활력을 불어 넣으십시오.

We'll connect you to an impressive faculty roster and a powerful alumni network.

인상적인 교수진과 강력한 동문 네트워크에 여러분을 연결시켜 드리겠습니다.

Internationally recognized program

국제적으로 인정받는 프로그램

By attending an esteemed program, you'll gain the confidence and credibility you need to succeed.

존경받는 프로그램에 참석함으로써 성공에 필요한 자신감과 신뢰를 얻을 수 있습니다.

WHAT'S UNIQUE ABOUT MIDWEST UNIVERSITY

An MBA teaches you essential business fundamentals, including strategic leadership, analytical thinking and communication skills. In today's competitive job market, MBA graduates continue to be in high demand—in fact, 86 % of companies plan to hire MBA graduates this year¹. MBA는 전략적 리더십, 분석적 사고 및 의사 소통 기술을 비롯하여 필수 비즈니스 기본을 배우게 된다. 오늘날의 경쟁력있는 고용 시장에서 MBA 졸업생은 계속해서 수요가 많습니다. 사실 올해 86 %의 기업이 MBA 졸업생을 고용 할 계획입니다.

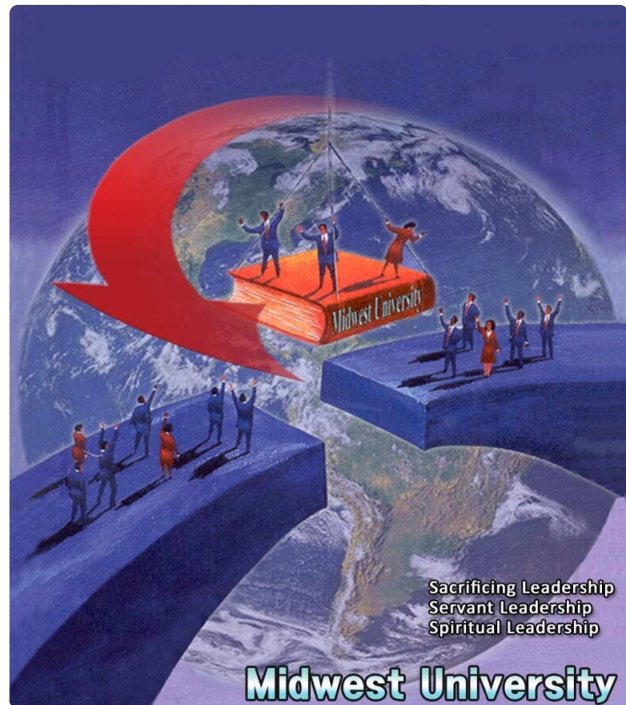
Master of Business Administration 경영학석사

M.B.A. 36 credit hours

Asset Investment Management 투자, 자산관리
 Aviation Safety Management 항공안전관리
 Community Development 지역개발
 Future Defense Fusion Management 국방융합경영관리
 Global Leadership 글로벌 리더십
 International Business Management 국제 비즈니스 경영관리
 Negotiation and Conflict Management 협상과 분쟁관리
 Public Emergency / Safety Calamity Security 공공안전과 재난관리
 Public Policy / Administration 공공정책과 행정
 Real Estate Asset Investment Management 부동산 투자 관리
 Strategic Human Resource Management 인력관리전략

MBA Core Courses (12 credits, 4 courses)
 Emphasis 12 credit hours 4 courses
 Qualitative Courses
 MB 551 Seminar - Special Topics
 MB 689 Internship / Independent Project 6
 CP 690 Capstone / Graduation Seminar

Total 36 credit hours



Doctoral Degree programs 박사학위과정

Doctor of Ministry. D. Min. 목회학 박사 39 credit hours

Counseling, Education, Mission, Pastoral Theology
상담, 교육, 선교, 목회신학.

Purpose

The Doctor of Ministry is designed to provide qualified students the opportunity to achieve a high level of excellence in the practice of ministry.
Concentrations:

Admission Requirements

1. Application form for admission
2. \$100.00 non-refundable application fee
3. A brief autobiographical statement
4. Official transcripts appropriate for the program

D. Min. in Pastoral Theology

1. The M. Div. degree or its equivalent degree from an accredited institution
2. A minimum 2.75 out of 4.0 GPA
3. 3 years of substantial post-master's degree ministry experience

D. Min in Counseling, Education, and Mission Studies

1. Master's degree from an accredited institution
2. A minimum 2.75 out of 4.0 GPA
3. Application Essay
4. Recommendation from a church pastor or former teacher.

Ph.D. Counseling Psychology 상담심리학 박사학위

60 credit hours

Life Design Counseling And Coaching 라이프 디자인과 코칭
Marriage and Family Counseling 결혼과 가족상담
Mental Health Counseling 정신건강 상담

Doctor of Musical Arts. D.M.A. 음악박사 60 credit hours

Voice, Piano, Composition, Conducting,
Church Music, Instruments,
Music Coaching, Musical Arts Convergence

Doctor of Leadership 리더십 박사 48 credit hours

Brain / Gifted Education Leadership 두뇌개발, 영재교육
Entrepreneurial Leadership 경영 리더십
International Aviation Leadership 국제 항공 리더십
Organizational / Ministry Leadership 조직, 사역리더십
Public / Political Leadership 공공, 정치 리더십

The Doctor of Leadership, Ph.D in Leadership program provides the place of communication in intelligence, character, spirituality, and leadership, which are necessary for opinion leaders. This leadership program is the highest ranking program enabling future leaders to build networks with colleagues of the same vision to develop their adaptability to new paradigms, and to fully use their educational backgrounds and capabilities as leaders.

Ph.D. in Leadership. Ph.D. 리더십박사 60 credit hours

Brain / Gifted Educational Leadership 두뇌개발, 영재교육
Defense Fusion Leadership 국방융합 리더십
International Aviation Leadership 국제 항공 리더십
International Culture & Arts 국제 문화예술
Entrepreneurial Leadership 경영 리더십
Organizational / Ministry Leadership 조직, 사역 리더십
Public / Political Leadership 공공, 정치 리더십



Dr. John R. Ashcroft
Honorary Doctor of Leadership
Missouri Secretary of State
미주리 국무장관



Deborah Fikes, Doctor of Leadership



Dr. Bruce Johnson
President, SIM

M.A. Counseling 상담학석사

Purpose

The purpose of the Master of Arts in Counseling program is to prepare students to serve as professional counselors in a variety of areas of mental health. This degree provides the academic and practical requirement to prepare for state licensure.

M.A Counseling 상담학 석사

Do you have a passion for helping people? Counselors are an important resource for people struggling with grief, conflict and other emotional and mental health issues. With a Master of Arts in Counseling from Midwest University, you'll gain the theoretical knowledge and critical skills that will help you improve the lives of individuals and families in a wide range of circumstances.

Our curriculum combines classroom education and hands-on field experience to provide you with the theory and skills you need to work with individuals, couples, families, and children in a variety of mental health settings.

The counseling program will prepare students academically to seek licensure as Professional Counselors or attain certification as school counselors. Our professional graduate degree program is divided into the following areas of emphasis with unique course requirements for each:

Major 전공

Christian Counseling 크리스찬 카운셀링
Life Design Counseling and Coaching 라이프 디자인 코칭
Mental Health Counseling 정신건강 상담
Marriage and Family Counseling 결혼과 가족상담
School Counseling 학교 상담

Core Courses
Emphasis Courses
Fee Elective
Internship Courses
Capstone Course.

** required for licensure
CO 504 Research and Statistics**
CO 627 Counseling Practicum**
CO 628 Counseling InternshipIII**

Total 48 Credit Hours

Ph.D. Counseling Psychology 상담심리학 박사

Purpose

The Doctor of Philosophy of Counseling Psychology is designed to prepare for counseling leaders of the field in the areas of advanced clinical Counseling practice, advanced research and supervision. The degree will be awarded upon the student's demonstration of a broad understanding of certain fields of knowledge, ability to conduct independent research, and ability to organize research into an acceptable dissertation that will represent a contribution to a field of study.

A RECOGNIZED DEGREE

Midwest University is committed to providing a high-quality, professionally-aligned, and competency-based education for adults. This is why we are one of the few online universities offering accredited degree programs in the counseling field.

SCHOLAR-PRACTITIONER FACULTY

Learn from faculty who hold Ph.D. and are active, licensed practitioners in the counseling profession. They bring years of experience to provide you with practical, relevant instruction and mentorship.

Your career options, depending on your specialization, may include a variety of roles, such as:*

Researcher, Counselor, Administrator, Consultant,
Political strategist, Teacher, Marketing director
Director of career services, Human resources manager
Staff psychologist, Law enforcement, probation, or correctional officer

Major 전공

Life Design Counseling and Coaching 라이프 디자인과 코칭
Marriage and Family Counseling 결혼과 가족상담
Mental Health Counseling 정신건강 상담

Research Methods 9
Capstone Courses
RS 807 Dissertation
Total 60 credit hours



Ph.D.



Doctor of Philosophy in Leadership

Emphases

- Educational Leadership- Brain / Gifted Education
- Entrepreneurial Leadership
- Organizational Leadership
- Political Leadership
- International Aviation Leadership
- International Culture & Arts
- Future Defense Fusion Management Leadership



ONLINE PH. D. IN LEADERSHIP STUDIES
TAKE CHARGE WITH AN ONLINE LEADERSHIP DOCTORATE

Academic institutions around the country need people who can guide and lead them in positive new directions. With an online leadership doctorate from Midwest University that could be you. A Ph.D. in leadership studies can help you prepare to become one of tomorrow's leaders and take today's institutions into the future.

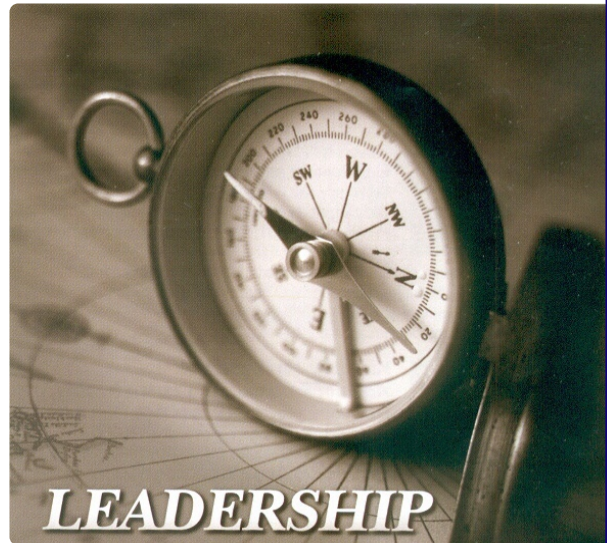
During the educational online Ph.D. Leadership program, you will participate in a comprehensive study of effective leadership, teaching, and administrative methods. Your Ph.D. in leadership studies online degree program also provides an in-depth look at the politics involved in the educational decision-making process, program planning and assessment strategies.

Midwest University online Ph.D. in Leadership includes curriculum options that will allow you to become an advanced practitioner with community organizations, higher education institutions Course work for our Ph.D. The PhD in Leadership Studies Online concentrations available are:

Ph.D. Degree Program

- Ph.D. Brain / Gifted Education 두뇌개발, 영재교육
- Ph.D. Defense Fusion Leadership 국방융합 리더십
- Ph.D. Entrepreneurial Leadership 경영 리더십
- Ph.D. International Aviation Leadership 국제항공 리더십
- Ph.D. International Culture & Arts Leadership 문화예술 미술
- Ph.D. Organizational / Ministry Leadership 조직, 사역리더십
- Ph.D. Public / Political Leadership 공공, 정치리더십

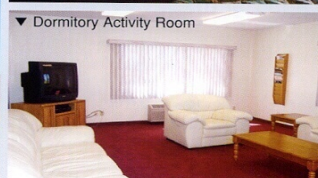
- Core Leadership Courses
- Electives
- Research Methods
- Capstone Course
- Dissertation
- Total 60 Credit Hours



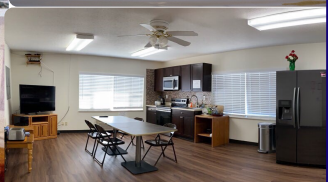
◀ Midwest Dormitory



▲ Midwest Dormitory Room



▼ Dormitory Activity Room



Global Leader's Network

Midwest University has students & alumni in
over 60 countries around the world.



Global University

Main Campus. 851 Parr Rd.
Wentzville, MO 63385 U.S.A
(636) 327-4645, 070-8690-2662
usa@midwest.edu

Washington D.C. Campus
wdc@midwest.edu
(571) 730-4750

Seoul, Korea Site
서울시 종로구 대학로 19 한국기독교 회관 810 호
Seoul@midwest.edu
(02) 3672-4516, 070-8836-4516



Peru Site.
Av. Oscar Benavides 4482. Bellavista Callao, Peru
Director: Young Min Ji
Cell -992 787 196, email: ymjperu@gmail.com
Office email : peru@midwest.edu

Midwest University
Wentzville, MO, U.S.A
www.midwest.edu

Printed August, 2019