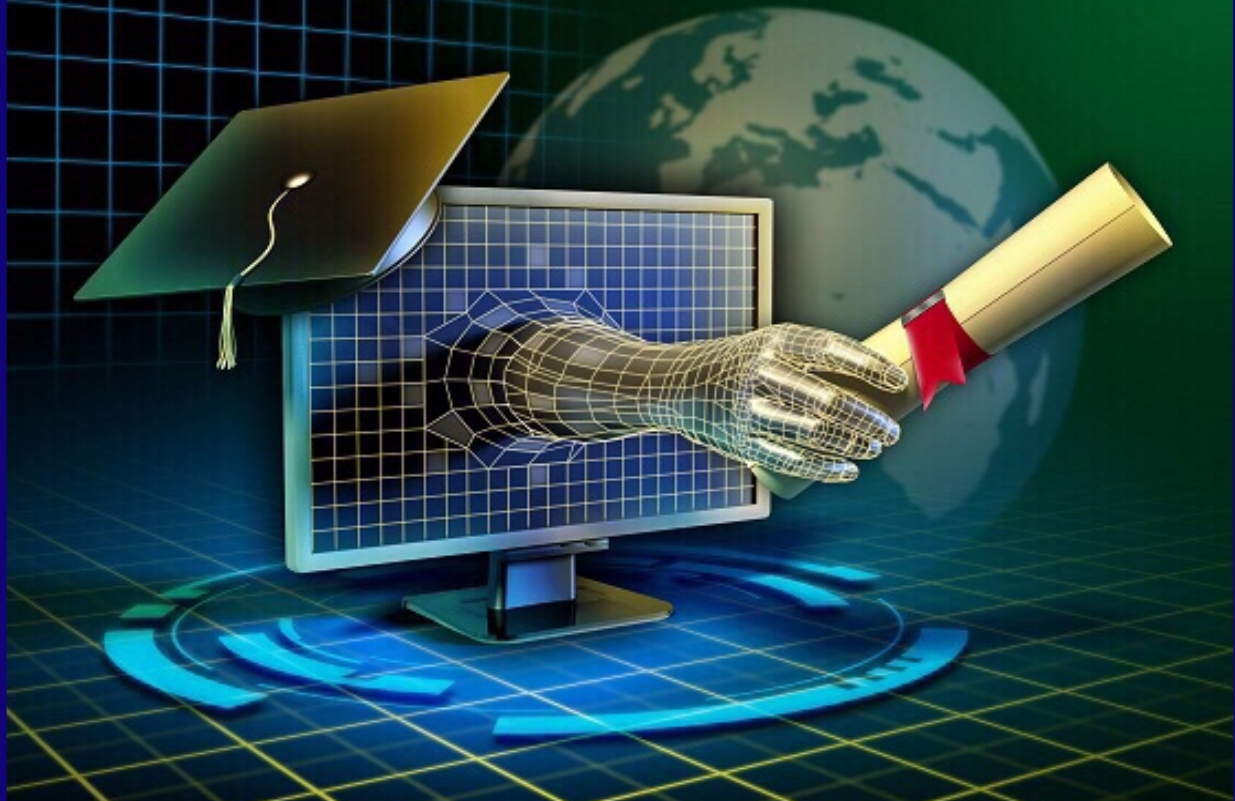


*34<sup>th</sup> Anniversary*

*1986-2020*

*Fall 2020*

# *A Dynamic Challenge*



*Midwest University*

[www.midwest.edu](http://www.midwest.edu)



**Midwest University**

**Wentzville, MO. U.S.A**



**Rep. Dr. Lindell F. Shumake**  
Chairman, Board of Trustees  
Former Missouri state House of Representatives



**Dr. James Song**  
President, Founder

## A Dynamic Challenge

Leaders of the 21st century should possess the ability to apply themselves in the environment of an ever-changing world. They should respond to global concerns in flexible and prompt ways by cooperating with worldwide networks of international academics.

Leaders of the future should specialize in their talents to reach their full potential. It's important to turn their responsibility into practice efficiently.

To do so, they should be cognizant of modern issues and thoroughly understand their role as an individual and as a leader. They should be able to design, plan and execute innovative solutions to address universal needs for shared joy and benefit.

We invite you to the Midwest University Degree Program, one of the most prominent educational plans, which will offer diverse fields of study to communicate and network with prominent pioneers of intelligence, character, spirituality and leadership to improve adaptability for the new paradigm.



### Accreditation

**U.S Department of Education (USDE) OPE ID: 035283**  
[www.ope.ed.gov/accreditation](http://www.ope.ed.gov/accreditation)

**CHEA** recognized by the Council for Higher Education Accreditation.  
(CHEA) [www.chea.org](http://www.chea.org)

**ABHE - Midwest University was Granted Accredited Status**  
ABHE. 5850 T.G. Lee Blvd., Ste. 130, Orlando, FL 32822,  
407.207.0808. [www.abhe.org](http://www.abhe.org)

**ATS Midwest University Graduate School of Theology** is an Associate Member with the Association of Theological Schools in the United States and Canada, (ATS). [www.ats.edu](http://www.ats.edu)

**IACBE International Accreditation Council for Business Education**  
An educational member is an academic business unit that has met the IACBE's requirements for educational membership and has affirmed its commitment to excellence in business education.

**ABHE and ATS, IACBE, NC-SARA**  
are institutional accrediting bodies recognized by the Council for Higher Education Accreditation (CHEA) [www.chea.org](http://www.chea.org)  
And U.S Department of Education (USDE) [www.ope.ed.gov/accreditation](http://www.ope.ed.gov/accreditation)

**International Student SEVIS I-20. F-1 Visa**  
International Student SEVIS I-20 Midwest University is approved by the U.S. Department of Homeland Security, a Division of U.S. Citizenship and Immigration Service (USCIS), to Issue Form I-20 to nonimmigrant students. Main campus and Washington DC. Campus.

**Missouri Department of Higher Education**  
<https://dhewd.mo.gov/public-and-independent-colleges.php>

### Approved Veterans Benefits



**J-1 VISA**  
EXCHANGE VISITOR PROGRAM

U.S. Department of State Certified

1. Exchange Visitor Professor and Research Scholar Programs
2. Exchange Visitor College and University Student Intern



**National Council for State Authorization Reciprocity Agreements**  
*A voluntary, regional approach to state oversight of distance education*







## Midwest Degree Programs



### College and a Graduate School of International Aviation : Graduate School of Counseling

**B.S. in Aviation Management / Flights** 123 Credit Hours  
Emphasis

General Flight, Helicopters (Pilot) Maintenance  
Cabin Crew, Flight Dispatcher (Air Traffic Control)

**M.B.A.** 36 Credit Hours Emphasis  
Aviation Safety / Security Management

**Doctor of Leadership** 48 Credit Hours Emphases  
International Aviation Management

**Ph.D.** 60 Credit Hours Emphases  
International Aviation Management

**M.A. in Counseling** 48 Credit Hours. Emphasis

Christian Counseling,  
Life Design Counseling And Coaching  
Marriage and Family Counseling,  
Mental Health Counseling  
School Counseling

**Ph. D. Counseling Psychology** 60 Credit Hours.  
Emphasis  
Marriage and Family, Mental Health  
Life Design Counseling And Coaching

### College and Graduate School of International Business

**B.A. in Business Administration** 123 Credit Hours Emphasis

Asset Investment, International Business  
International Marlin Business, Marketing  
Real Estate Investment Management

**M.B.A.** 36 Credit Hours Emphasis  
Asset Investment Management,  
Community Development, Global Business,  
Management Innovation Strategy  
Negotiation and Conflict Management  
Public Policy and Administration  
Public Leadership  
Emergency / Safety Calamity Security Management  
Real Estate Investment Management  
Strategic Human Resource Management

### Graduate School of Education

**M.A. in Education** 48 Credit Hours. Emphasis  
Brain and Gifted Education, Christian Education

**M.A. TESOL** 36 Credit Hours  
English Education

**Doctor of Leadership** 48 Credit Hours. Emphasis  
Brain and Gifted Education

**Ph. D.** 60 Credit Hours. Emphasis  
Brain and Gifted Education

### Graduate School of Music & Art

**M.M.** 48 Credit Hours

**D.M.A.** 60 Credit Hours

**Ph.D.** 60 Credit Hours. Emphasis  
International Culture & Arts.

### Graduate School of Defense

**M.B.A.** 36 Credit Hours. Emphasis  
Defense Fusion System Management

**Ph.D.** 60 Credit Hours. Emphasis  
Defense Fusion Leadership

### College and Graduate School of Theology

**B.A. in Theology** 123 Credit Hours. Emphasis  
Biblical Studies, Christian Education

**Master of Divinity** 96 Credit Hours Emphasis  
Counseling Ministry, Educational Ministry, Inter-Culture Mission  
Pastoral Ministry, Pastoral Leadership.

**Doctor of Ministry** 39 Credit Hours. Emphasis  
Counseling Ministry, Educational Ministry, Inter-Culture Ministry  
Pastoral Theology, Preaching with Multimedia, Pastoral Leadership

**Doctor of Leadership** 48 Credit Emphasis  
Organizational / Ministry / Mission Leadership

**Ph.D.** 60 Credit Hours. Emphasis  
Organizational/ Ministry / Mission Leadership

### Graduate School of Leadership

**MBA** 36 Credit Hours. Emphasis  
Global Leadership  
Sports Management & Leadership

**Doctor of Leadership** 48 Credit Hours. Emphasis  
Entrepreneurial Leadership  
Management Innovation Strategy  
Political Leadership,  
Sport management  
Organizational Leadership

**Ph.D.** 60 Credit Hours. Emphasis  
Entrepreneurial Leadership  
Management Innovation Strategy  
Political Leadership,  
Sport Management Leadership  
Organizational Leadership







# Bachelor Degree Programs



## **B.S. in International Aviation Management/ Flight**

123 credit hours. Emphasis

Aviation Management / Flight Pilot  
Aviation Management Helicopter Pilot  
Aviation Maintenance  
Aviation Dispatcher  
Aviation Cabin Crew

### **Purpose**

Midwest University offers Bachelor of Science Aviation Management degrees so that students may utilize current management theory and comprehensive aviation knowledge base to manage different segments of aviation.

## **B.A in Business Administration**

123 credit hours. Emphasis

Asset Investment Management  
International Business Management  
International Marlin Business Management  
Marketing  
Real Estate Investment Management

### **Purpose**

The Bachelor of Arts in Business Administration degree program is designed to provide students with the fundamental knowledge of business.

## **B.A in Theology**

123 credit hours. Emphasis

### **Purpose**

The Bachelor of Arts in Theology degree program is designed to prepare students for Christian ministries through a thorough knowledge of the Bible (including biblical languages), biblical theology, practical ministry training and biblical studies.

Biblical Studies

Christian Education

### **Admission Requirements**

1. Application form for admission
2. \$100.00 non-refundable application fee
3. A brief autobiographical statement
4. A high school diploma, high school equivalency test or Ability to Benefit Test
5. Application essay
6. Recommendation from a former teacher



**Dr. John R. Ashcroft**  
Commencement Main Speaker  
Missouri Secretary of State





**You will receive a pilot license issued by the United States Federal Aviation Administration (FAA) and be able to start your career at airlines all over the world. Make your dream come true through Midwest University.**



## Make Your Dreams Come True at Midwest University

### BACHELOR OF SCIENCE IN AVIATION MANAGEMENT / FLIGHTS



After completing your Bachelor of Science in Aviation Management Degree at Midwest University with jetliner or helicopter practical training and passing the US (FAA) Federal Aviation Administration exam, you will be qualified to work anywhere in the world as an airline pilot.

**B.S. in Aviation Management / Flights** 123 Credit. Emphasis  
 Aviation Management and Flight (Pilot, Drone)  
 Aviation Flight Management Helicopters (Pilot)  
 Aviation Maintenance Engineer  
 Flight Dispatcher (Air Traffic Control)  
 Cabin Crew

**M.B.A.** 36 Credit Emphasis  
 Aviation Safety / Security Management

**Doctor of Leadership** 48 Credit Emphasis  
 International Aviation Management

**Ph.D.** 60 Credit Emphasis  
 International Aviation Management

#### FAA International Professional Pilot Certificate

Man and woman over 17 years old may participate in the Professional aircraft pilot license process from FAA over of 10 months Average Completion

- Private Pilot Certificate & Instrument Pilot,
- Multi Engine Commercial Pilot

#### 10 Months Average Completion estimated costs

Private Pilot Certificate, Instrument Rating  
 Commercial Pilot Certificate - AMEL

**include -Housing, Book & Supplies, Course Materials  
 Aviation ESL, Examiner fee, FAA Medical Exam**

Third time payment \$ 22,256.59 x 3 payment  
 One time payment \$ 64,511.87

#### Application Qualification:

- 1) Education, high school grads and those with some or completed college diplomas, college dropouts, or college graduates (recommendation letters)
- 2) Those whose scores are above TOEFL 520, IBT 68, CBT 190, or TOEIC 690  
 (Improvement is possible through ESL program for those who have insufficient TOEFL scores)
- 3) Physical condition, Those who are suitable for the pilot's required physical conditions  
 (applicable to FAA terms of body)
- 4) No disqualification grounds for US visa
- 5) No criminal records (including DUI or incidents involving drug or alcohol)
- 6) background check.

#### Tuition Cost

Degree and Pilot Certificate, Maintenance Engineer Flight Dispatcher

- |   |           |
|---|-----------|
| 1). Application (Test & Interview fee, non-refundable)        | \$ 200    |
| International Student - SEVIS Processing fee (non-refundable) | \$ 750    |
| 2). Aviation English Program ( 2 semesters )                  | \$ 9,000  |
| 3). 2 year Transfer Bachelor Degree, 69 credit hours          | \$ 27,895 |
| 4). 4 year Bachelor Degree 123 credit hours                   | \$ 48,585 |



# Master Degree Programs



## Master of Business Administration

**M.B.A.** 36 credit hours. Emphasis

Asset Investment Management  
Aviation Safety Management  
Community Development  
Emergency / Safety / Calamity / Security Management  
Future Defense Fusion System  
International Business Management  
Management Innovation Strategy  
Negotiation and Conflict Management  
Public Leadership  
Public Policy / Administration  
Real Estate Asset Investment Management  
Sports Management / Leadership  
Strategic Human Resource Management

## M.A. in Counseling

48 credit hours. Emphasis

Christian Counseling  
Life Design Counseling and Coaching  
Marriage and Family Counseling  
Mental Health Counseling  
School Counseling

### Purpose

The purpose of the Master of Arts in Counseling program is to prepare students to serve as professional counselors in a variety of areas of mental health. This degree provides the academic and practical requirement to prepare for Various Counseling related qualifications

## M.A. in Education

48 credit hours. Emphasis  
Brain/Gifted Education  
Christian Education

### Purpose

The Master of Arts in Education programs offer opportunities for teachers and professionals to improve their practice in many different areas of study including: Brian / Gifted Education and Christian Education.

The Master of Arts in Brian / Gifted Education program at Midwest University prepares you as a Midwest student to work effectively with gifted children.

You will examine and analyze research needed to identify and serve gifted children and learn the knowledge and skills required to develop and provide the most current instructional methods and services for gifted students. You will also learn how to create gifted programs based on the needs of a school district and learn how to work with administrators, school board members, and parents.

This program is excellent for teachers in honors classrooms as well as administrators focused on becoming gifted coordinators. When you complete the program, you may also enroll in these courses as electives as allowed by your specific program.

## Master of Divinity

96 Credit Hours

Emphasis

Counseling Ministry, Educational Ministry,  
Inter-Culture Ministry  
Pastoral Ministry, Pastoral Leadership.

## M.M.

48 credit hours. Emphasis

Voice, Piano, Composition, Conducting, CCM, Church  
Music, Instruments, Music Coaching, Musical Arts  
Convergence

### Purpose

Master of Music degree program is designed to equip students as professional musicians in their various applied areas from classical to contemporary, enabling them to obtain a profession in music performance and history.

### Admission Requirements for the Master of Music Program:

1. Application form for admission with \$100 non-refundable fee.
2. Official transcripts for the program
3. Bachelor's degree in either Music or its equivalent from an accredited institution
4. 2.25 out of 4.0 grade point average (GPA)
5. DVD Audition of music performance or work.
6. Recommendation from former teacher and two recent photographs (for student ID)

## M.A. in English Education (TESOL)

36 credit hours.

### Purpose

The Master of Arts in English Education for Teaching English as a Second Language provides greater opportunities for teaching specialists to enter broader fields of service. This professional credential is designed to prepare English language instructors to assume teaching responsibilities in worldwide settings such as overseas public schools, post-secondary institutions, language schools, and corporate-based language programs.

### Admission Requirements for the Master of Arts in TESOL Degree Program:

1. Application and fee \$100.00 (non - refundable)
2. Official transcript of Bachelor's degree from an accredited Institution with GPA 2.25+
3. A 1000 to 1500 word essay describing why you're interested in pursuing the program

### Additional requirements for International Students:

4. TOEFL score report (80+) or a Midwest English proficiency test (80+) and an oral interview





# Global

# MBA

## Master of Business Administration

Emphasis

Asset Investment, Real Estate Investment, Aviation Safety Management  
Community Development, Future Defense Fusion Management  
Emergency / Safety Calamity Security Management  
Global Business Management, Global Leadership  
Management Innovation Strategy  
Negotiation and Conflict Management  
Public Policy and Administration  
Sports Management  
Strategic Human Resource & Management



**Flexibility for busy professionals**  
Concerned about fitting an MBA into your already busy schedule? Our flexible program can help. Take classes online, on campus or a hybrid of both, and complete your MBA in just over 1-1.5 years.

**Strong network to jumpstart your career**  
We'll connect you to an impressive faculty roster and a powerful alumni network.

**Internationally recognized program**  
By attending an esteemed program, you'll gain the confidence and credibility you need to succeed.

### WHAT'S UNIQUE ABOUT MIDWEST UNIVERSITY

An MBA teaches you essential business fundamentals, including strategic leadership, analytical thinking and communication skills. In today's competitive job market, MBA graduates continue to be in high demand—in fact, 86 percent of companies plan to hire MBA graduates this year<sup>1</sup>.

## Master of Business Administration

36 credit hours. Emphasis

Asset Investment Management  
Aviation Safety Management  
Community Development  
Emergency / Safety / Calamity / Security Management  
Future Defense Fusion System  
International Business Management  
Management Innovation Strategy  
Negotiation and Conflict Management  
Public Leadership  
Public Policy / Administration  
Real Estate Asset Investment Management  
Sports Management / Leadership  
Strategic Human Resource Management

MBA Core Courses (12 credits, 4 courses)  
Emphasis 12 credit hours 4 courses  
Qualitative Courses  
MB 551 Seminar - Special Topics  
MB 689 Internship / Independent Project 6  
CP 690 Capstone / Graduation Seminar

**Total 36 credit hours**



## Graduate School of Defense

**M.B.A.**

36 Credit Hours Emphasis

Defense Fusion System Management

**Ph.D.**

60 Credit Hours Emphasis

Defense Fusion Leadership

### U.S Veterans Benefits

Education of veterans and their eligible dependent, National Guardsmen, and select Reservists **APPROVED** courses offered by Midwest University. Education of veterans or eligible persons under the provisions of Section 3676, Title 38, United State Code and Title 5, Missouri Code of State Regulation 30-4, 020.





## Doctoral Degree programs

### Doctor of Ministry

39 credit hours Emphasis  
Counseling Ministry, Educational Ministry,  
inter- Culture Ministry, Pastoral Theology  
Preaching with Multimedia, Pastoral Leadership

#### Purpose

The Doctor of Ministry is designed to provide qualified students the opportunity to achieve a high level of excellence in the practice of ministry. Concentrations:

#### Admission Requirements

1. Application form for admission
2. \$100.00 non-refundable application fee
3. A brief autobiographical statement
4. Official transcripts appropriate for the program

#### D. Min. in Pastoral Theology

1. The M. Div. degree or its equivalent degree from an accredited institution
2. A minimum 2.75 out of 4.0 GPA
3. 3 years of substantial post-master's degree ministry experience

#### D. Min in Counseling, Education, and Mission Studies

1. Master's degree from an accredited institution
2. A minimum 2.75 out of 4.0 GPA
3. Application Essay
4. Recommendation from a church pastor or former teacher.

### Ph.D. in Counseling Psychology

60 credit hours  
Emphasis  
Life Design Counseling And Coaching  
Marriage and Family Counseling  
Mental Health Counseling

### Doctor of Musical Arts. D.M.A.

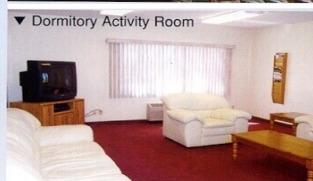
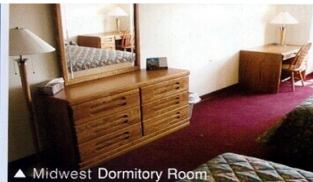
60 credit hours  
Emphasis  
Voice, Piano, Composition, Conducting,  
Church Music, Instruments,  
Music Coaching, Musical Arts Convergence

### Doctor of Leadership

48 credit hours  
Emphasis  
Brain / Gifted Education  
Entrepreneurial Leadership  
International Aviation Management  
Management Innovation Strategy  
Organizational / Ministry/ Mission Leadership  
Political Leadership  
Real Estate Management  
Sports Management & Leadership

### Ph.D. Emphasis. 60 credit hours

Brain / Gifted Education  
Defense Fusion Leadership  
Entrepreneurial Leadership  
International Aviation Management  
International Culture & Arts  
Management Innovation Strategy  
Organizational / Ministry/ Mission Leadership  
Political Leadership



## M.A. Counseling

### M.A Counseling

Do you have a passion for helping people? Counselors are an important resource for people struggling with grief, conflict and other emotional and mental health issues. With a Master of Arts in Counseling from Midwest University, you'll gain the theoretical knowledge and critical skills that will help you improve the lives of individuals and families in a wide range of circumstances.

Our curriculum combines classroom education and hands-on field experience to provide you with the theory and skills you need to work with individuals, couples, families, and children in a variety of mental health settings.

The counseling program will prepare students academically to seek licensure as Professional Counselors or attain certification as school counselors. Our professional graduate degree program is divided into the following areas of emphasis with unique course requirements for each:

#### Purpose

The purpose of the Master of Arts in Counseling program is to prepare students to serve as professional counselors in a variety of areas of mental health. This degree provides the academic and practical requirement to prepare for various Counseling related qualifications.

#### Emphasis

Christian Counseling  
Life Design Counseling and Coaching  
Mental Health Counseling  
Marriage and Family Counseling  
School Counseling

Core Courses  
Emphasis Courses  
Free Electives  
Internship Courses  
Capstone Course.

\*\* required for licensure  
CO 504 Research and Statistics\*\*  
CO 627 Counseling Practicum\*\*  
CO 628 Counseling InternshipIII\*\*

**Total 48 Credit Hours**

## Ph.D. Counseling Psychology

### Purpose

The Doctor of Philosophy of Counseling Psychology is designed to prepare for counseling leaders of the field in the areas of advanced clinical Counseling practice, advanced research and supervision. The degree will be awarded upon the student's demonstration of a broad understanding of certain fields of knowledge, ability to conduct independent research, and ability to organize research into an acceptable dissertation that will represent a contribution to a field of study.

### A RECOGNIZED DEGREE

Midwest University is committed to providing a high-quality, professionally-aligned, and competency-based education for adults. This is why we are one of the few online universities offering accredited degree programs in the counseling field.

### SCHOLAR-PRACTITIONER FACULTY

Learn from faculty who hold Ph.D. and are active, licensed practitioners in the counseling profession. They bring years of experience to provide you with practical, relevant instruction and mentorship.

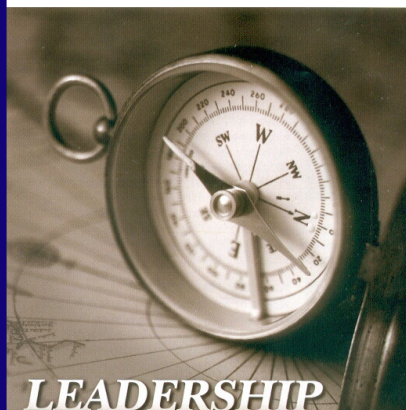
**Your career options**, depending on your specialization, may include a variety of roles, such as: Professor, Life designer, Researcher, Counselor, Administrator, Consultant, Political strategist, Teacher, Marketing director, Director of career services, Human resources manager, Staff psychologist, Law enforcement, Probation, or Correctional officer

#### Emphasis

Life Design Counseling and Coaching  
Marriage and Family Counseling  
Mental Health Counseling

Core Courses  
Emphasis  
Electives  
Research Methods  
Capstone Course  
Dissertation

**Total 60 credit hours**







# Ph.D.

## Doctor of Philosophy

### Emphasis

Brain / Gifted Education  
 Entrepreneurial Leadership  
 Future Defense Fusion Leadership  
 International Aviation Management  
 International Culture & Arts  
 Management Innovation Strategy  
 Organizational / Ministry Leadership  
 Political Leadership



### Ph.D. STUDIES

#### TAKE CHARGE WITH AN ONLINE DOCTORATE

Academic institutions around the country need people who can guide and lead them in positive new directions. With an online leadership doctorate from Midwest University that could be you. A Ph.D. studies can help you prepare to become one of tomorrow's leaders and take today's institutions into the future.

During the educational online Ph.D. program, you will participate in a comprehensive study of effective leadership, teaching, and administrative methods. Your Ph.D. studies online degree program also provides an in-depth look at the politics involved in the educational decision-making process, program planning and assessment strategies.

Midwest University online Ph.D. includes curriculum options that will allow you to become an advanced practitioner with community organizations, higher education institutions Course work for our Ph.D. The Ph. D. Studies Online Emphasis available are:

### Ph.D. 60 Credit hours

#### Emphasis

Brain / Gifted Education  
 Defense Fusion Leadership  
 Entrepreneurial Leadership  
 International Aviation Management  
 International Culture & Arts  
 Management Innovation Strategy  
 Organizational / Ministry or Mission Leadership  
 Political Leadership

#### Core Leadership Courses

Electives  
 Research Methods  
 Capstone Course  
 Dissertation

#### Total 60 Credit Hours





## *Global Leader's Network*

Midwest University has students & alumni in  
over 70 countries around the world.



## *Global University*



**Main Campus**  
851 Parr Rd.  
Wentzville, MO 63385 U.S.A  
1-(636) 327-4645  
[usa@midwest.edu](mailto:usa@midwest.edu)



**Washington D.C. Campus**  
[wdc@midwest.edu](mailto:wdc@midwest.edu)  
1-(571) 730-4750



**Dallas Site**  
[Dallas@midwest.edu](mailto:Dallas@midwest.edu)



**Seoul, Korea Site**  
[Seoul@midwest.edu](mailto:Seoul@midwest.edu)  
(82) 2- 3672-4516

**Midwest University**  
Wentzville, MO, U.S.A  
[www.midwest.edu](http://www.midwest.edu)