

1986 - 2022

2022-2023



A Dynamic Challenge

Global Network

MIDWEST UNIVERSITY

www.midwest.edu

ST. LOUIS



Dr. Lindell F. Shumake
Chairman, Board of Trustees



Dr. James Song
President, Founder



A Dynamic Challenge

Leaders of the 21st century should possess the ability to apply themselves in the environment of an ever-changing world. They should respond to global concerns in flexible and prompt ways by cooperating with worldwide networks of international academics.

Leaders of the future should specialize in their talents to reach their full potential. It's important to turn their responsibility into practice efficiently.

To do so, they should be cognizant of modern issues and thoroughly understand their role as an individual and as a leader. They should be able to design, plan, and execute innovative solutions to address universal needs for shared joy and benefit.

We invite you to the Midwest University Degree Program, one of the most prominent educational plans, which will offer diverse fields of study to communicate and network with prominent pioneers of intelligence, character, spirituality, and leadership to improve adaptability for the new paradigm.



Accreditation

U.S Department of Education (USDE) OPE ID: 035283
www.ope.ed.gov/accreditation

CHEA recognized by the Council for Higher Education Accreditation.
(CHEA) www.chea.org

ABHE - Midwest University was Granted Accredited Status
ABHE, 5850 T.G. Lee Blvd., Ste. 130, Orlando, FL 32822,
407.207.0808. www.abhe.org

ABHE and IACBE, NC-SARA
are institutional accrediting bodies recognized by the
Council for Higher Education Accreditation (CHEA) (www.chea.org)
And U.S Department of Education (USDE) (www.ope.ed.gov/accreditation)

Missouri Department of Higher Education
<https://dhewd.mo.gov/public-and-independent-colleges.php>
State Council of Higher Education for Virginia
Texas Higher Education Coordinating Board
California Bureau for Private Postsecondary Education (BPPE)

J -1 VISA U.S. Department of State Certified

J-1 Visa DS-2019, DS-7002
Exchange Professor and Research Scholar Programs Postdoc
Exchange Visitor College and University Student Internship
J-1 Study, Academic Training, Certificate

International Student SEVIS I-20. F-1 Visa
International Student SEVIS I-20 Midwest University is approved by the U.S. Department of Homeland Security, a Division of U.S. Citizenship and Immigration Service (USCIS), to Issue Form I-20 to nonimmigrant students. Main campus and Washington DC. Campus, Dallas, Texas Site

 **National Council for State Authorization Reciprocity Agreements**
A voluntary, regional approach to state oversight of distance education

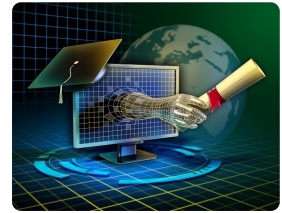


ISASI Member of The International Society of Air Safety Investigators



Midwest Degree Programs

2022 -2023 Academic Year



Bachelor Degrees

Bachelor of Arts in Business Administration

(123 Credit hours) with Emphasis
Asset Investment
Business Management
Data Science
Marketing
Real Estate Investment Management
Sport Science / Health Care Management
e. Sport

Bachelor of Arts in Theology (123 Credit Hours) with Emphasis

Biblical Studies
Christian Education

Bachelor of Science in Aviation and Future



Transportation Technology (123 Credit) with Emphasis
Flight Operations (Pilot)
Helicopters Pilot (FAA)
Cabin Crew
Flight Dispatcher
Aircraft Maintenance Engineer
Unmanned Aircraft Systems (Drone)

Master Degrees

Master of Arts in Counseling

(48 Credit Hours) with Emphasis
Christian Counseling
Life Design Counseling And Coaching
Marriage and Family Counseling
Mental Health Counseling

Master of Arts in Education

(48 Credit Hours) with Emphasis
Brain and Gifted Education
Christian Education
Practical English Education

Master of Arts in Teachers of English to Speaks of Other Language. (36 Credit hours)

Master of Business Administration

(36 Credit Hours) with Emphasis
Asset Investment Management
Aviation Safety and Security Management
Defense Fusion System Management
Global Business Management
Golf Management
Health Care Management
Leadership
Management Innovation Strategy
Public Policy and Administration
Public /Safety/Emergency/Security Management
Real Estate Investment Management
Sport Management
Strategic Human Resource Management

Master of Divinity (96 Credit Hours)

Master of Music (48 Credit Hours) Area Emphasis

Music Education, Church Music, Composition
Conducting, Instrument, Music Coaching, Piano, Voice
Musical Arts Convergence

Doctoral Degrees

Doctor of Leadership (48 Credit Hours) with Emphasis

Crisis Management Leadership
Entrepreneurial Leadership
Health Care Management
Management Innovation Strategy
Organizational / Ministry/ Mission/ Leadership
Political Leadership
Real Estate Management / Auction
Sport Management
Practical English

Doctor of Ministry (40 Credit Hours) with Emphasis

Counseling Ministry
Educational Ministry
Inter-Cultureal Ministry
Pastoral Theology

Doctor of Musical Arts (60 Credit Hours). Specialization Area

Church Music, Composition
Conducting, Instrument, Voice, Piano
Music Coaching & Musical Arts Convergence

Ph. D. in Counseling Psychology (60 Credit Hours) with Emphasis

Marriage and Family
Mental Health
Life Design Counseling / Coaching

Ph. D. in Education (60 Credit Hours) with Emphasis

Brain Developing and Gifted Education
Brain Counseling Education
Higher Educational Leadership

Ph.D. in Leadership (60 Credit Hours) with Emphasis

Defense Fusion System Leadership
Entrepreneurial Leadership
International Aviation Management & Leadership
International Culture & Arts.
Management Innovation Strategy
Organizational / Ministry/ Mission/ Leadership
Political Leadership

Ph. D. in Music (60 Credit Hours)

Music Education



Study Options

On Campus Courses
Online Courses, Blended
Courses, Intensive
Independent Studies
Anytime, Anywhere



ESL
 English as a Second Language
 English, Aviation English
 Career English

**Midwest Business School
 Certificate Programs**

Aviation / Further Transportation Technology

- International Professional Pilot - FAA
- Maintenance - FAA
- Aviation Safety and Security, Cabin Crew

Health Care Department

- 1. Health Care Program

Business Department

- 1. Business Management Program
- 2. E-Business Management Program
- 3. Business Marketing Program

Leadership, Music, Counseling, Education, Ministry



Dr. Bill Federer
 President, American Minute

Tuition

per credit hour

Bachelor Degree Programs

B.A. Business Administration	\$395.00
B.A. Theology / Education	\$250.00
B.S. Aviation / Futures Transportation Technology	\$395.00

Master Degree Programs

M.A. Counseling	\$395.00
M.A. Education in Christian Education	\$395.00
M.A. Education in Brain / Gifted Education	\$495.00
M.A. TESOL, English Education	\$395.00
Master of Music	\$395.00
MBA.	\$495.00
M. Div.	\$250.00

Doctor Degree Programs

Doctor of Leadership	\$495.00
Doctor of Ministry	\$295.00
Doctor of Musical Arts	\$495.00
Ph.D. in Counseling Psychology,	\$550.00
Ph.D. in Education	\$550.00
Ph.D. in Leadership	\$550.00
Ph.D. in Music	\$550.00



U.S Veterans Benefits

Education of veterans and their eligible dependent, National Guardsmen, and select Reservists **APPROVED** courses offered by Midwest University. Education of veterans or eligible persons under the provisions of Section 3676, Title 38, United State Code and Title 5, Missouri Code of State Regulation 30-4, 020.



Bachelor Degree Programs



Bachelor of Arts in Business Administration

123 credit hours with Emphasis

Asset Investment & Management
Data Science
Global Business Management
Marketing
Real Estate Investment Management
Sport Science / Health Care Management
e. Sport

Bachelor of Arts in Theology

123 credit hours with Emphasis

Biblical Studies
Christian Education

Bachelor of Science

Aviation and Future Transportation Technology

123 credit hours with Emphasis

Flight Operations (Pilot) Drone
Helicopter Pilot
Flight Dispatcher
Cabin Crew
Aircraft Maintenance Engineer
Unmanned Aircraft Systems (Drone)

Admission Requirements

- 1) Application form for admission
- 2) \$100.00 non-refundable application fee
- 3) A brief autobiographical statement
- 4) A high school diploma, high school equivalency test or Ability to Benefit Test
- 5) Application essay
- 6) Recommendation from a former teacher



Dr. John R. Ashcroft
Commencement Main Speaker
Missouri Secretary of State
미주리주 국무장관



You will receive a pilot license issued by the United States Federal Aviation Administration (FAA) and be able to start your career at airlines all over the world. Make your dream come true through Midwest University.



Make Your Dreams Come True at Midwest University



BACHELOR OF SCIENCE IN AVIATION AND FUTURE TRANSPORTATION TECHNOLOGY

After completing your Bachelor of Science in Aviation Management Degree at Midwest University with jetliner or helicopter practical training and passing the US (FAA) Federal Aviation Administration exam, you will be qualified to work anywhere in the world as an airline pilot.

B.S IN AVIATION AND FUTURE TRANSPORTATION TECHNOLOGY

- 123 credit hours with Emphasis
- Flight Operations (Pilot)
- Helicopters Pilot
- Aircraft Maintenance Engineer
- Flight Dispatcher
- Cabin Crew
- Unmanned Aircraft Systems (Drone)

Midwest University is Corporate Member The International Society of Air Safety Investigators

FAA International Professional Pilot Certificate
 Man and woman over 17 years old may participate in the Professional aircraft pilot license program from FAA over of 10 months average completion

- Private Pilot Certificate & Instrument Pilot,
- Multi Engine Commercial Pilot

M.B.A. 36 Credit Hours with Emphasis
 Aviation Safety / Security Management

DOCTOR OF LEADERSHIP 48 Credit Hours with Emphasis
 Aviation Management Leadership

PH.D. in Leadership 60 Credit Hours with Emphasis
 Aviation Management

Application Qualification:

- 1) Education, high school grads and those with some or completed college diplomas, college dropouts, or college graduates (recommendation letters)
- 2) Those whose scores are above TOEFL 520, IBT 68, CBT 190, or TOEIC 690 (Improvement is possible through ESL program for those who have insufficient TOEFL scores)
- 3) Physical condition, Those who are suitable for the pilot's required physical conditions (applicable to FAA terms of body)
- 4) No disqualification grounds for US visa
- 5) No criminal records (including DUI or incidents involving drug or alcohol)
- 6) background check.

Midwest Pilot and Engineer Training Center Partner US Aviation in Denton, Texas

Air pilot flight and Maintenance Engineer Training Center with the US Aviation located in Denton, Texas. good weather conditions, sufficient training **aircraft (120+)** and more, and over 250 students are trained to fly.



Midwest Pilot Training Center
 Wentzville Main Campus



Midwest Pilot, Engineer Training Center
 Denton, TX.
 US Aviation



Master Degree Programs



Master of Business Administration M.B.A. 36 Credit Hours with Emphasis

- Asset Investment Management
- Aviation safety Security Management
- Defense Fusion System Management
- Global Business
- Golf Management
- Health Care Management
- Management Innovation Strategy
- Public Policy and Administration Leadership
- Real Estate Investment Management
- Sport Management
- Strategic Human Resource Management

Master of Arts in Counseling 48 Credit Hours with Emphasis

- Christian Counseling
- Life Design Counseling and Coaching
- Marriage and Family Counseling
- Mental Health Counseling

** required for licensure
CO 504 Research and Statistics**
CO 627 Counseling Practicum**
CO 628 Counseling InternshipIII**

Master of Arts in Education 48 Credit Hours with Emphasis

- Brain / Gifted Education
- Christian Education
- Practical English Education

Master of Divinity 96 Credit hours

Master of Music 48 Credit hours with Emphasis

- Composition, Conducting, Church Music
- Instruments! Music Coaching! Music Education
- Musical Arts Convergence! Piano! Voice

Master of Arts in Teachers of English to Speaks of Other Languages (TESOL) 36 Credit Hours



Global

MBA

Master of Business Administration

Flexibility for busy professionals
Concerned about fitting an MBA into your already busy schedule? Our flexible program can help. Take classes online, on campus or a hybrid of both, and complete your MBA in just over 1-1.5 years.

Strong network to jumpstart your career
We'll connect you to an impressive faculty roster and a powerful alumni network.

Internationally recognized program
By attending an esteemed program, you'll gain the confidence and credibility you need to succeed.

WHAT'S UNIQUE ABOUT MIDWEST UNIVERSITY

An MBA teaches you essential business fundamentals, including strategic leadership, analytical thinking and communication skills. In today's competitive job market, MBA graduates continue to be in high demand—in fact, 86 percent of companies plan to hire MBA graduates this year

Master of Business Administration

36 Credit Hours with Emphasis

- Asset Investment Management
- Aviation safety / Security Management
- Defense Fusion System / Management
- Global Business
- Golf Management
- Health Care Management
- Management Innovation Strategy
- Public Policy and Administration
- Public Safety Emergency Security Management
- Leadership
- Real Estate Investment Management
- Sport Management / Leadership
- Strategic Human Resource Management

MBA Core Courses 12 credit hours
 Emphasis 12 credit hours
 MB 551 Seminar - Special Topics 3
 MB 689 Internship / Independent Project 6
 CP 690 Capstone / Graduation Seminar 3
Total 36 Credit Hours



GSD Director/ Professor, Dr. Kwang H, Chang

Graduate School of Defense

M.B.A. 36 Credit Hours Area Emphasis
Defense Fusion System Management

Ph.D. in Leadership 60 Credit Hours Area Emphasis
Defense Fusion Leadership



U.S Veterans Benefits

Education of veterans and their eligible dependent, National Guardsmen, and select Reservists **APPROVED** courses offered by Midwest University. Education of veterans or eligible persons under the provisions of Section 3676, Title 38, United State Code and Title 5, Missouri Code of State Regulation 30-4, 020.



Doctoral Degree programs

Doctor of Ministry. 40 Credit Hours with Emphasis

Counseling Ministry
Educational Ministry
Inter- Cultural Ministry
Pastoral Theology

Admission Requirements

D. Min. in Pastoral Theology

1. The M. Div. degree or its accredited institution or equivalent degree
2. A minimum 2.75 out of 4.0 GPA
3. 3 years of substantial post-master's degree ministry experience

D. Min. in Counseling, Education, and Inter- Cultural Ministry

1. Master's degree from an accredited institution
2. A minimum 2.75 out of 4.0 GPA
3. Application Essay
4. Recommendation from a church pastor or former teacher.

Doctor of Leadership (48 Credit Hours with Emphasis)

Crisis Management Leadership
Entrepreneurial Leadership
Health Care Management & Leadership
Management Innovation Strategy
Organizational / Ministry/ Mission/ Leadership
Political Leadership
Practical English Education
Sport management / Leadership
Real Estate Management & Auction

Doctor of Musical Arts. D.M.A.

60 Credit Hours with Emphasis
Voice, Piano, Composition, Conducting; CCM
Church Music, Instruments, Music Coaching,
Musical Arts Convergence

Ph. D. in Counseling Psychology

60 Credit Hours with Emphasis
Life Design Counseling And Coaching
Marriage and Family Counseling
Mental Health Counseling

Your career options, depending on your specialization, may include a variety of roles, such as:* Professor, Life designer, Researcher, Counselor, Administrator, Consultant, Political strategist, Teacher, Marketing director
 Director of career services, Human resources manager
 Staff psychologist, Law enforcement, Probation, or Correctional officer

Ph. D. in Education (60 Credit Hours) with Emphasis)

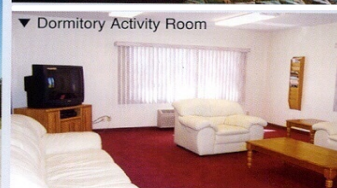
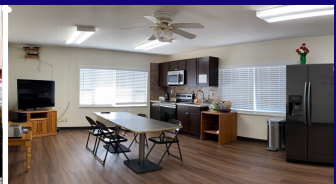
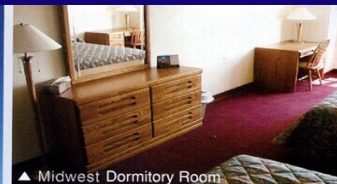
Brain Developing and Gifted Education
Brain Counseling Education
Higher Educational Leadership

Ph. D. in Leadership (60 Credit Hours with Emphasis)

Defense Fusion Leadership
Entrepreneurial Leadership
International Aviation Management
International Culture & Arts.
Leadership
Management Innovation Strategy
Organizational / Ministry/ Mission Leadership
Political Leadership
Public Health Care Policy & Management

Ph. D. in Music (60 Credit Hours)

Music Education





Ph.D. Doctor of Philosophy in Leadership



Ph.D. STUDIES
TAKE CHARGE WITH AN ONLINE DOCTORATE

Academic institutions around the country need people who can guide and lead them in positive directions. An online leadership doctorate program at Midwest University can help you meet your Academic goals to become one of tomorrow's leaders and take today's institutions into the future.

During the educational online Ph.D. program, you will participate in a comprehensive study of effective leadership, teaching, and administrative methods. Your Ph.D. online degree programs also provide you with an in-depth insight involved in the educational decision-making process, program planning, and assessment strategies.

Midwest University online Ph.D. Programs include curriculum options that will allow you to become an advanced practitioner with community organizations, higher education institutions. The Ph. D. Studies Online Emphasis available are listed below

Doctor of Philosophy in Leadership

60 Credits Hours with Emphasis

Defense Fusion Leadership
Entrepreneurial Leadership
International Aviation Management
International Culture & Arts.
Leadership
Management Innovation Strategy
Organizational / Ministry/ Mission Leadership
Public Health Care Policy & Management
Political Leadership



Dr. Bruce Johnson
President, SIM



Dr. Jose L.L. Cornejo
Presidente, Supreme Court of Peru
현, 페루 대법원장



Dr. John R. Ashcroft
Missouri Secretary of State
현, 미주리주 국무장관



MIRI

RESEARCH FOUNDATION

Midwest International Reserch Institute
Midwest University
Wentzville, MO. USA



Research Area

- Global Leadership / Coaching.
- Research for International Education.
- Public Policy & Future National Strategic.
- Global Diaspora / Immigrant Culture & Language
- Health Supplement / Bio Natural Healing / Health care
- Business / e business, Trade / Management, Stat up.
- Research for World Religions and Mission
- Big-data Analysis & Computer Science, e-Sport, AI.
- International Aviation / Space / Automobile, Drone and Futures Transportation Technology
- International Human Rights
- International Institute of Fine Arts / Music
- Government- Public service, Human Resources, Tax,
- US Government & Local Government Administration
- Crisis Management / FIMA Programs.
- Veterinary, Animal Science.
- Communication & Social Media
- Material Science & Engineering.
- Agriculture, Food & Natural Resources.
- Military Weapons Equipment.
- Future Green Energy & Technology

MIRI Research Foundation.

- 1). Civil servant Job training - 6 months - 5 years. Operation of Research Program research in local government agencies or mountains in the US.
- 2). General Researcher invited by MIRI Research Foundation
- 3). Programs for special purpose training (2 weeks, 4 weeks, 8 weeks)
- 4). J-1 Study Programs - ESL, Leadership, Aviation, Certificate Program

- * Researcher visa (J-1 Visa 1-5 years) and researcher ID card (ID card).
- * Can be recommended as a instructor on the country, and other important seminars
- * Certificate for activity during Miri Research period, Award for research performance
- * Email account offers OOO@midwest.edu
- * J-1 and companion family spouses can also be legally part-time.
- * We continue to return to Miri Research Institute and Identification of Miri Research Institute
- * If the researcher or the spouse do a degree process, special scholarship benefits
- * Researcher spouse ESL special benefit (other regional residents are Online ESL)
- * Employment and entrepreneurs in the US

MIRI 연구재단의 공무원 직무연수, 일반 연구원, PostDoc, 교환교수로 초빙받는 경우

- * 연구원 체류비자 (J-1 Visa 1-5 년) 및 연구원 신분증 (ID Card) 제공.
- * 국, 내외 중요 세미나에 감사로 추천
- * MIRI 연구 기간중 활동에 대한 Certificate, 연구실적에 대한 Award 수여
- * 이메일 계정 제공 ooo@midwest.edu
- * 거주지 제한 없고 동반 자녀는 인근 공립학교 무상교육 가능
- * J-1 의 동반가족 배우자도 SSN 받고 아르바이트 할수 있음.
- * 연구원 마치고 귀국 해도 계속 MIRI 연구원 자격부여 및 ID Card 제공
- * 연구원 혹은 배우자가 학위과정 혹은 ESL 할 경우 (타 지역은 Online) 혜택
- * 연구원의 미국내 취업 및 창업 컨설팅

Government Officer Research Scholar 국가 공무원 직무 연수 혹은 일반 리서치 스칼라 초청



J-1 VISA



미 국무성 U.S. Department of State Certified
J-1 Visa DS-2019, DS-7002. 자체 발행, 관리, 스폰서

1. Exchange Professor and Research Scholar Programs
Postdoc, Professional Area
2. Exchange Visitor College and University
Student Internship, J-1 Study, Academic Training, Certificate



MIRI

RESEARCH FOUNDATION

Midwest International Reserch Institute
Midwest University
Wentzville, MO. USA
www.mirusa.us, www.Jvisa.us
www.midwest.edu
Phone, 1-636-327-4645
miri@midwest.edu

Global Leaders Network

Midwest University has students & alumni in over 70 countries around the world.



Main Campus, St. Louis
851 Parr Rd. Wentzville, MO 63385
1-(636) 327-4645 usa@midwest.edu



Washington D.C. Campus
wdc@midwest.edu 1-(571) 730-4750



Torrance, Irvine , CA
muca@midwest.edu
glica@midwest.edu



Dallas, Texas
dallas@midwest.edu



Seoul, Korea
Seoul@midwest.edu, 8202-3672-4516



Lima, Peru
Peru@midwest.edu



Bangkok, Thailand
Thailand@midwest.edu



Midwest University
851 Parr Rd. Wentzville, MO, U.S.A
usa@midwest.edu, www.midwest.edu