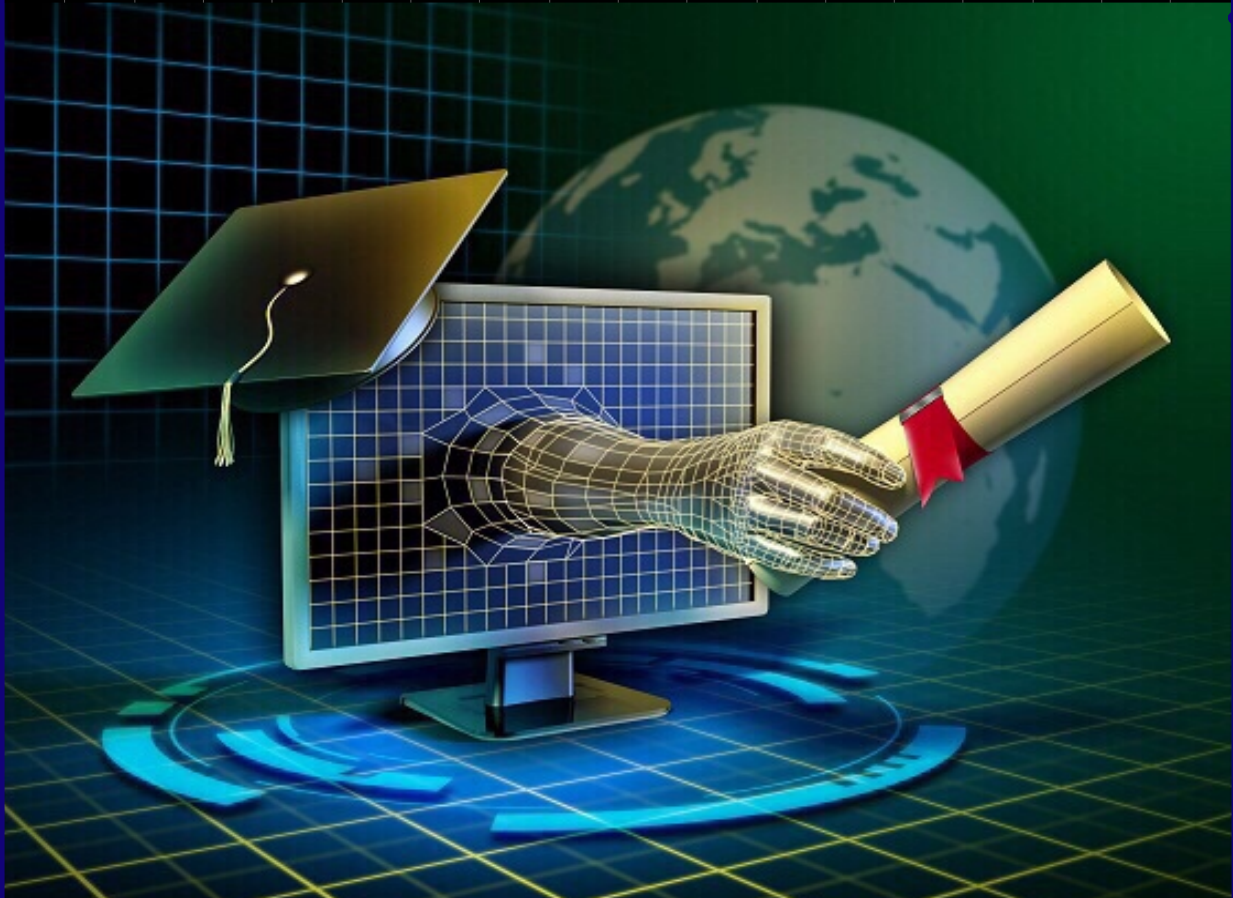


34th Anniversary

1986-2020

Spring 2020



Midwest University

www.midwest.edu



Midwest University

Wentzville, MO. U.S.A



Rep. Dr. Lindell F. Shumake
Chairman, Board of Trustees
Former Missouri state House of Representatives



Dr. James Song
President, Founder



A Dynamic Challenge

Leaders of the 21st century should possess the ability to apply themselves in the environment of an ever-changing world. They should respond to global concerns in flexible and prompt ways by cooperating with worldwide networks of international academics.

Leaders of the future should specialize in their talents to reach their full potential. It's important to turn their responsibility into practice efficiently.

To do so, they should be cognizant of modern issues and thoroughly understand their role as an individual and as a leader. They should be able to design, plan and execute innovative solutions to address universal needs for shared joy and benefit.

We invite you to the Midwest University Degree Program, one of the most prominent educational plans, which will offer diverse fields of study to communicate and network with prominent pioneers of intelligence, character, spirituality and leadership to improve adaptability for the new paradigm.

Accreditation



U.S Department of Education (USDE) OPE ID: 035283
www.ope.ed.gov/accreditation

CHEA recognized by the Council for Higher Education Accreditation.
(CHEA) www.chea.org

ABHE - Midwest University was Granted Accredited Status
ABHE. 5850 T.G. Lee Blvd., Ste. 130, Orlando, FL 32822,
407.207.0808. www.abhe.org

ATS Midwest University Graduate School of Theology is an Associate Member with the Association of Theological Schools in the United States and Canada, (ATS). www.ats.edu

ABHE and ATS are institutional accrediting bodies recognized by the Council for Higher Education Accreditation (CHEA) www.chea.org And U.S Department of Education (USDE) www.ope.ed.gov/accreditation

International Student SEVIS I-20. F-1 Visa

International Student SEVIS I-20 Midwest University is approved by the U.S.

Department of Homeland Security, a Division of U.S. Citizenship and Immigration Service (USCIS), to Issue Form I-20 to nonimmigrant students. Main campus and Washington DC. Campus.

Missouri Department of Higher Education

Degree Programs search. <http://collegesearch.mo.gov/filter.php>



Approved Veterans Benefits



National Council for State Authorization Reciprocity Agreements
A voluntary, regional approach to state oversight of distance education



J-1 VISA
EXCHANGE VISITOR PROGRAM
U.S. Department of State Certified

1. Exchange Visitor Professor and Research Scholar Programs
2. Exchange Visitor College and University Students
J-1 Student- Intern Programs

International Student SEVIS I-20. F-1 Visa

Midwest Degree Programs



College and a Graduate School of International Aviation :

B.S. in Aviation Management / Flights 123 Credit Hours

Aviation Management and Flight (Pilot)
Aviation Management Helicopters (Pilot)
Aviation Maintenance.
Flight Attendants
Flight Dispatcher (Air Traffic Control)

M.B.A. 36 Credit Hours

Aviation Safety / Security Management

Ph.D. in Leadership 60 Credit Hours

International Aviation Leadership

College and Graduate School of International Business

B.A. in Business Administration 123 Credit Hours

Asset Investment Management
International Business Management
International Marlin Business Management
Marketing
Real Estate Investment Management

M.B.A. 36 Credit Hours

Asset Investment Management
Aviation Safety / Security Management
Community Development
Defense Fusion System Management
Global Business, Global Leadership
Management Innovation Strategy
Negotiation and Conflict Management
Public Policy and Administration
Public / Political Leadership
Emergency / Safety Calamity Security Management
Real Estate Investment Management
Sports Management
Strategic Human Resource Management

Graduate School of Defense

M.B.A. 36 Credit Hours

Defense Fusion System Management

Ph.D. in Leadership 60 Credit Hours

Defense Fusion Leadership

Graduate School of Leadership

Doctor of Leadership 48 Credit Hours

Brain / Gifted Education Leadership
Entrepreneurial Leadership
International Aviation Leadership
Management Innovation Strategy
Organizational Leadership
Public / Political Leadership
Real Estate Management
Sports Management Leadership

Ph.D. in Leadership 60 Credit Hours

Brain / Gifted Educational Leadership
Defense Fusion Leadership
International Aviation Leadership
International Culture & Arts
Entrepreneurial Leadership
Management Innovation Strategy
Organizational / Ministry Leadership
Public / Political Leadership

Graduate School of Counseling

M.A. in Counseling 48 Credit Hours

Christian Counseling
Life Design Counseling And Coaching
Marriage and Family Counseling
Mental Health Counseling
School Counseling

Ph. D. Counseling Psychology 60 Credit Hours

Marriage and Family Counseling
Mental Health Counseling
Life Design Counseling And Coaching

Graduate School of Education

M.A. in Education 48 Credit Hours

Brain and Gifted Education
Christian Education

M.A. TESOL 36 Credit Hours

English Education

Ph. D. in Leadership 60 Credit Hours

Brain and Gifted Education Leadership

Graduate School of Music & Art

M.M. Voice, Piano, Composition, 48 Credit Hours

D.M. Conducting, Church Music, 48 Credit Hours

D.M.A. Instruments, Music Coaching, 60 Credit Hours

Ph.D. Musical Arts Convergence 60 Credit Hours

Ph.D. International Culture & Arts. 60 Credit Hours

College and Graduate School of Theology

B.A. in Theology 123 Credit Hours

Biblical Studies, Christian Education

Master of Divinity 96 Credit Hours

Divinity

Doctor of Ministry 39 Credit Hours

Counseling
Education
Mission
Pastoral Theology
Preaching with Multimedia

Ph.D. in Leadership 60 Credit Hours

Organizational/ Ministry Leadership



Tuition

per credit hour

Bachelor Degree Programs

B.A. Business Administration	\$395.00
B.A. Theology / Education	\$250.00
B.S. Aviation Management / Flights	\$395.00

Master Degree Programs

M.A. Counseling	\$320.00
M.A. Education in Christian Education	\$320.00
M.A. Education in Brain/ Gifted Education	\$495.00
M.A. English Education	\$320.00
M.M.	\$320.00
M.B.A.	\$495.00
M.Div	\$250.00

Doctor Degree Programs

Doctor of Leadership	\$495.00
Doctor of Ministry	\$295.00
Doctor of Musical Arts	\$495.00
Ph.D. in Leadership	\$550.00
Ph.D. in Counseling / Psychology	\$550.00



U.S Veterans Benefits

Education of veterans and their eligible dependent, National Guardsmen, and select Reservists **APPROVED** courses offered by Midwest University. Education of veterans or eligible persons under the provisions of Section 3676, Title 38, United State Code and Title 5, Missouri Code of State Regulation 30-4, 020.



ESL (English, Aviation English)
Korean Language School & Culture

Certificate Int'l Professional Pilot - FAA

International Aviation Safety and Security, Leadership, Music, Counseling, Education, Ministry, Defense Leadership

MIRI Midwest International Research Institute

www.mirusa.us



- Global Leadership Institute / Forum
 - Government Administration Research Institution
 - International Education Research Institute
 - International Public Policy & Administration Research Institute
 - International Future National Strategic Research Institute
 - Global Diaspora / Immigrant Culture Research Institute
Food Culture, Restaurant, Beauties
 - International Health Supplement / Bio/Natural Healing / Healthcare Research Institute
 - International Business Incubator / Trade / Management Research Institute
 - World Religions and Mission Research Institute
 - Institute of Big-data Analysis & Computer Science Research Institute
 - Global Arts & Culture Research Institute
 - International Language Institute
 - International Human Rights Research Institute -
International Equal Opportunity, Discrimination
 - Railroad / Aviation - Safety and Security Research Institute
 - International Nuclear Energy Research Institute
- International business Incubator**

A Dynamic Challenge



Study Options

On Campus Courses, Online Courses, Blended Courses, Intensive, Independent Studies
Anytime, Anywhere



Bachelor Degree Programs



B.S. in International Aviation Management/ Flight 123 credit hours

Aviation Management / Flight Pilot
Aviation Management Helicopter Pilot
Aviation Maintenance
Dispatcher
Flight Attendant Cabin Crew

Purpose
Midwest University offers Bachelor of Science Aviation Management degrees so that students may utilize current management theory and comprehensive aviation knowledge base to manage different segments of aviation.

B.A in Business Administration 123 credit hours

Asset Investment Management
International Business Management
International Marlin Business Management
Marketing
Real Estate Investment Management

Purpose
The Bachelor of Arts in Business Administration degree program is designed to provide students with the fundamental knowledge of business.

B.A in Theology 123 credit hours

Purpose
The Bachelor of Arts in Theology degree program is designed to prepare students for Christian ministries through a thorough knowledge of the Bible (including biblical languages), biblical theology, practical ministry training and biblical studies.

Biblical Studies
Christan Education

Admission Requirements

1. Application form for admission
2. \$100.00 non-refundable application fee
3. A brief autobiographical statement
4. A high school diploma, high school equivalency test or Ability to Benefit Test
5. Application essay
6. Recommendation from a former teacher



Dr. John R. Ashcroft
Commencement Main Speaker
Missouri Secretary of State



You will receive a pilot license issued by the United States Federal Aviation Administration (FAA) and be able to start your career at airlines all over the world. Make your dream come true through Midwest University.



Make Your Dreams Come True at Midwest University
BACHELOR OF SCIENCE IN AVIATION MANAGEMENT / FLIGHTS



After completing your Bachelor of Science in Aviation Management Degree at Midwest University with jetliner or helicopter practical training and passing the US (FAA) Federal Aviation Administration exam, you will be qualified to work anywhere in the world as an airline pilot.

B.S. in Aviation Management / Flights 123 Credit
 Aviation Management and Flight (Pilot, Drone)
 Aviation Flight Management Helicopters (Pilot)
 Aviation Maintenance
 Flight Dispatcher (Air Traffic Control)
 Flight Attendant (Cabin Crew)

M.B.A. 36 Credit Aviation Safety / Security Management

Doctor of Leadership 48 Credit
 International Aviation Leadership

Ph.D. in Leadership 60 Credit
 International Aviation Leadership

FAA International Professional Pilot Certificate
 Man and woman over 17 years old may participate in the Professional aircraft pilot license process from FAA over of 12 months
 • Instrument Pilot
 • Multi Engine Commercial Pilot

Summary estimated costs

Private Pilot Certificate	\$ 12,567.24
Instrument Rating	\$ 9,778.60
Commercial Pilot Certificate - AMEL	\$ 25,929.10
Grand Total	\$ 48,274.85

Tuition & Pilot Certificate Cost

Degree and Pilot Certificate, Helicopter Certificate, Flight Dispatcher

Application Qualification:

- 1) Education, high school grads and those with some or completed college diplomas, college dropouts, or college graduates (recommendation letters)
- 2) Those whose scores are above TOEFL 520, IBT 68, CBT 190, or TOEIC 690
 (Improvement is possible through ESL program for those who have insufficient TOEFL scores)
- 3) Physical condition, Those who are suitable for the pilot's required physical conditions
 (applicable to FAA terms of body)
- 4) No disqualification grounds for US visa
- 5) No criminal records (including DUI or incidents involving drug or alcohol)
- 6) background check.

1). Application (Test & Interview fee, non-refundable)	\$ 200
International Student - SEVIS Processing fee (non-refundable)	\$ 600
2). Aviation English Program (2 semesters)	\$ 9,000
3). 2 year Transfer Bachelor Degree, 69 credit hours	\$ 27,895
4). 4 year Bachelor Degree 123 credit hours	\$ 48,585
(Flights Cost Aviation \$48,274, Helicopter	\$ 99,750
5). Only Aviation Pilot Certificate Cost	\$ 48,274



Master Degree Programs



Master of Business Administration

M.B.A. 36 credit hours

Asset Investment Management
Aviation Safety Management
Community Development
Emergency / Safety / Calamity / Security Management
Future Defense Fusion System
International Business Management
Management Innovation Strategy
Negotiation and Conflict Management
Public Leadership
Public Policy / Administration
Real Estate Asset Investment Management
Sports Management
Strategic Human Resource Management

M.A. in Counseling

48 credit hours

Christian Counseling
Life Design Counseling and Coaching
Marriage and Family Counseling
Mental Health Counseling
School Counseling

Purpose

The purpose of the Master of Arts in Counseling program is to prepare students to serve as professional counselors in a variety of areas of mental health. This degree provides the academic and practical requirement to prepare for Various Counseling related qualifications

M.A. in Education

48 credit hours

Brain/Gifted Education
Christian Education

Purpose

The Master of Arts in Education programs offer opportunities for teachers and professionals to improve their practice in many different areas of study including: Brian / Gifted Education and Christian Education.

The Master of Arts in Brian / Gifted Education program at Midwest University prepares you as a Midwest student to work effectively with gifted children.

You will examine and analyze research needed to identify and serve gifted children and learn the knowledge and skills required to develop and provide the most current instructional methods and services for gifted students. You will also learn how to create gifted programs based on the needs of a school district and learn how to work with administrators, school board members, and parents.

This program is excellent for teachers in honors classrooms as well as administrators focused on becoming gifted coordinators. When you complete the program, you may also enroll in these courses as electives as allowed by your specific program.

Master of Divinity

96 credit hours

Purpose

The Master of Divinity program is designed to equip students to serve in a wide variety of callings, including pastoral ministry, youth ministry, campus ministry, chaplaincy, and missions.

M.M.

48 credit hours

Voice, Piano, Composition, Conducting, CCM, Church Music, Instruments, Music Coaching, Musical Arts Convergence

Purpose

Master of Music degree program is designed to equip students as professional musicians in their various applied areas from classical to contemporary, enabling them to obtain a profession in music performance and history.

Admission Requirements for the Master of Music Program:

1. Application form for admission with \$100 non-refundable fee.
2. Official transcripts for the program
3. Bachelor's degree in either Music or its equivalent from an accredited institution
4. 2.25 out of 4.0 grade point average (GPA)
5. DVD Audition of music performance or work.
6. Recommendation from former teacher and two recent photographs (for student ID)

M.A. in English Education (TESOL)

36 credit hours

Purpose

The Master of Arts in English Education for Teaching English as a Second Language provides greater opportunities for teaching specialists to enter broader fields of service. This professional credential is designed to prepare English language instructors to assume teaching responsibilities in worldwide settings such as overseas public schools, post-secondary institutions, language schools, and corporate-based language programs.

Admission Requirements for the Master of Arts in TESOL Degree Program:

1. Application and fee \$100.00 (non - refundable)
2. Official transcript of Bachelor's degree from an accredited Institution with GPA 2.25+
3. A 1000 to 1500 word essay describing why you're interested in pursuing the program

Additional requirements for International Students:

4. TOEFL score report (80+) or a Midwest English proficiency test (80+) and an oral interview



Global

MBA

Master of Business Administration

Asset Investment, Real Estate Investment, Aviation Safety Management
Community Development, Future Defense Fusion Management
Emergency / Safety Calamity Security Management
Global Business Management, Global Leadership
Management Innovation Strategy
Negotiation and Conflict Management
Public Policy and Administration
Sports Management
Strategic Human Resource & Management

Flexibility for busy professionals
Concerned about fitting an MBA into your already busy schedule? Our flexible program can help. Take classes online, on campus or a hybrid of both, and complete your MBA in just over 1-1.5 years.

Strong network to jumpstart your career
We'll connect you to an impressive faculty roster and a powerful alumni network.

Internationally recognized program
By attending an esteemed program, you'll gain the confidence and credibility you need to succeed.

WHAT'S UNIQUE ABOUT MIDWEST UNIVERSITY

An MBA teaches you essential business fundamentals, including strategic leadership, analytical thinking and communication skills. In today's competitive job market, MBA graduates continue to be in high demand—in fact, 86 percent of companies plan to hire MBA graduates this year¹.

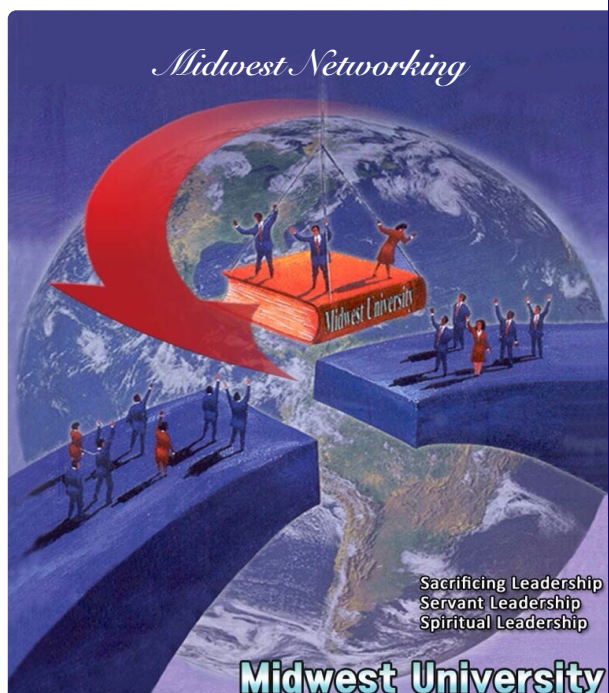
Master of Business Administration

M.B.A. 36 credit hours

Asset Investment Management
Aviation Safety Management
Community Development
Emergency / Safety / Calamity / Security Management
Future Defense Fusion System
International Business Management
Management Innovation Strategy
Negotiation and Conflict Management
Public Leadership
Public Policy / Administration
Real Estate Asset Investment Management
Sports Management
Strategic Human Resource Management

MBA Core Courses (12 credits, 4 courses)
Emphasis 12 credit hours 4 courses
Qualitative Courses
MB 551 Seminar - Special Topics
MB 689 Internship / Independent Project 6
CP 690 Capstone / Graduation Seminar

Total 36 credit hours



Doctoral Degree programs

Doctor of Ministry

39 credit hours

Counseling, Education, Mission, Pastoral Theology
Preaching with Multimedia

Purpose

The Doctor of Ministry is designed to provide qualified students the opportunity to achieve a high level of excellence in the practice of ministry.

Concentrations:

Admission Requirements

1. Application form for admission
2. \$100.00 non-refundable application fee
3. A brief autobiographical statement
4. Official transcripts appropriate for the program

D. Min. in Pastoral Theology

1. The M. Div. degree or its equivalent degree from an accredited institution
2. A minimum 2.75 out of 4.0 GPA
3. 3 years of substantial post-master's degree ministry experience

D. Min in Counseling, Education, and Mission Studies

1. Master's degree from an accredited institution
2. A minimum 2.75 out of 4.0 GPA
3. Application Essay
4. Recommendation from a church pastor or former teacher.

Ph.D. Counseling Psychology

60 credit hours

Life Design Counseling And Coaching
Marriage and Family Counseling
Mental Health Counseling

Doctor of Musical Arts. D.M.A.

60 credit hours

Voice, Piano, Composition, Conducting,
Church Music, Instruments,
Music Coaching, Musical Arts Convergence

Doctor of Leadership

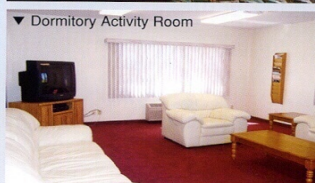
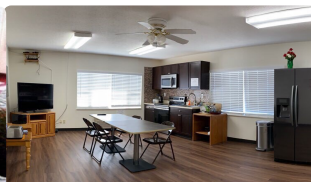
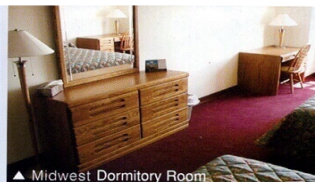
48 credit hours

Brain / Gifted Education Leadership
Entrepreneurial Leadership
International Aviation Leadership
Management Innovation Strategy Leadership
Organizational Leadership
Political Leadership
Real Estate Management
Sports Management Leadership

Ph.D. in Leadership

60 credit hours

Brain / Gifted Educational Leadership
Defense Fusion Leadership
Entrepreneurial Leadership
International Aviation Leadership
International Culture & Arts
Management Innovation Strategy Leadership
Organizational / Ministry Leadership
Public / Political Leadership



M.A. Counseling

Purpose

The purpose of the Master of Arts in Counseling program is to prepare students to serve as professional counselors in a variety of areas of mental health. This degree provides the academic and practical requirement to prepare for various Counseling related qualifications.

M.A Counseling

Do you have a passion for helping people? Counselors are an important resource for people struggling with grief, conflict and other emotional and mental health issues. With a Master of Arts in Counseling from Midwest University, you'll gain the theoretical knowledge and critical skills that will help you improve the lives of individuals and families in a wide range of circumstances.

Our curriculum combines classroom education and hands-on field experience to provide you with the theory and skills you need to work with individuals, couples, families, and children in a variety of mental health settings.

The counseling program will prepare students academically to seek licensure as Professional Counselors or attain certification as school counselors. Our professional graduate degree program is divided into the following areas of emphasis with unique course requirements for each:

Major

Christian Counseling
Life Design Counseling and Coaching
Mental Health Counseling
Marriage and Family Counseling
School Counseling

Core Courses
Emphasis Courses
Free Electives
Internship Courses
Capstone Course.

Total 48 Credit Hours

** required for licensure
CO 504 Research and Statistics**
CO 627 Counseling Practicum**
CO 628 Counseling InternshipIII**

Ph.D. Counseling Psychology

Purpose

The Doctor of Philosophy of Counseling Psychology is designed to prepare for counseling leaders of the field in the areas of advanced clinical Counseling practice, advanced research and supervision. The degree will be awarded upon the student's demonstration of a broad understanding of certain fields of knowledge, ability to conduct independent research, and ability to organize research into an acceptable dissertation that will represent a contribution to a field of study.

A RECOGNIZED DEGREE

Midwest University is committed to providing a high-quality, professionally-aligned, and competency-based education for adults. This is why we are one of the few online universities offering accredited degree programs in the counseling field.

SCHOLAR-PRACTITIONER FACULTY

Learn from faculty who hold Ph.D. and are active, licensed practitioners in the counseling profession. They bring years of experience to provide you with practical, relevant instruction and mentorship.

Your career options, depending on your specialization, may include a variety of roles, such as: Professor, Life designer, Researcher, Counselor, Administrator, Consultant, Political strategist, Teacher, Marketing director, Director of career services, Human resources manager, Staff psychologist, Law enforcement, Probation, or Correctional officer

Major

Life Design Counseling and Coaching
Marriage and Family Counseling
Mental Health Counseling

Core Courses
Emphases
Electives
Research Methods
Capstone Course
Dissertation
Total 60 credit hours



Ph.D.

Doctor of Philosophy in Leadership

Emphases

Educational Leadership- Brain / Gifted Education
Entrepreneurial Leadership
Future Defense Fusion Leadership
International Aviation Leadership
International Culture & Arts
Management Innovation Strategy Leadership
Organizational / Ministry Leadership
Political Leadership



PHD IN LEADERSHIP STUDIES
TAKE CHARGE WITH AN ONLINE LEADERSHIP DOCTORATE

Academic institutions around the country need people who can guide and lead them in positive new directions. With an online leadership doctorate from Midwest University that could be you. A Ph.D. in leadership studies can help you prepare to become one of tomorrow's leaders and take today's institutions into the future.

During the educational online Ph.D. Leadership program, you will participate in a comprehensive study of effective leadership, teaching, and administrative methods. Your Ph.D. in leadership studies online degree program also provides an in-depth look at the politics involved in the educational decision-making process, program planning and assessment strategies.

Midwest University online Ph.D. in Leadership includes curriculum options that will allow you to become an advanced practitioner with community organizations, higher education institutions Course work for our Ph.D. The PhD in Leadership Studies Online concentrations available are:

Ph.D. Degree Program

Ph.D. Brain / Gifted Education
Ph.D. Defense Fusion Leadership
Ph.D. Entrepreneurial Leadership
Ph.D. International Aviation Leadership
Ph.D. International Culture & Arts Leadership
Ph.D. Management Innovation Strategy Leadership
Ph.D. Organizational / Ministry Leadership
Ph.D. Political Leadership

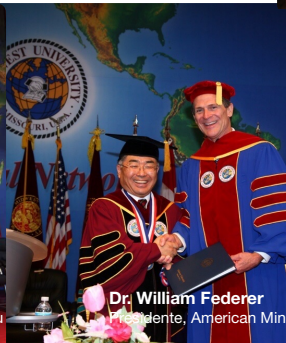
Core Leadership Courses
Electives
Research Methods
Capstone Course
Dissertation
Total 60 Credit Hours



Midwest University
Dr. John R. Ashcroft
Missouri Secretary of State
현, 미주리 국무장관



Dr. Jose L.L. Cornejo
Presidente, Supreme Court of Preu
현, 페루 대법원장



Dr. William Federer
Presidente, American Minute



Dr. Bruce Johnson
President, SIM

Global Leader's Network

Midwest University has students & alumni in
over 70 countries around the world.



Global University

Main Campus. 851 Parr Rd.
Wentzville, MO 63385 U.S.A
(636) 327-4645, 070-8690-2662
usa@midwest.edu

Washington D.C. Campus
wdc@midwest.edu
(571) 730-4750

Seoul, Korea Site Seoul@midwest.edu
(02) 3672-4516, 070-8836-4516



Peru Site.

Av. Oscar Benavides 4482. Bellavista Callao, Peru
Director: Young Min Ji
Cell -992 787 196, email: ymjperu@gmail.com
Office email : peru@midwest.edu

Midwest University
Wentzville, MO, U.S.A
www.midwest.edu

Printed Nov, 2019

